

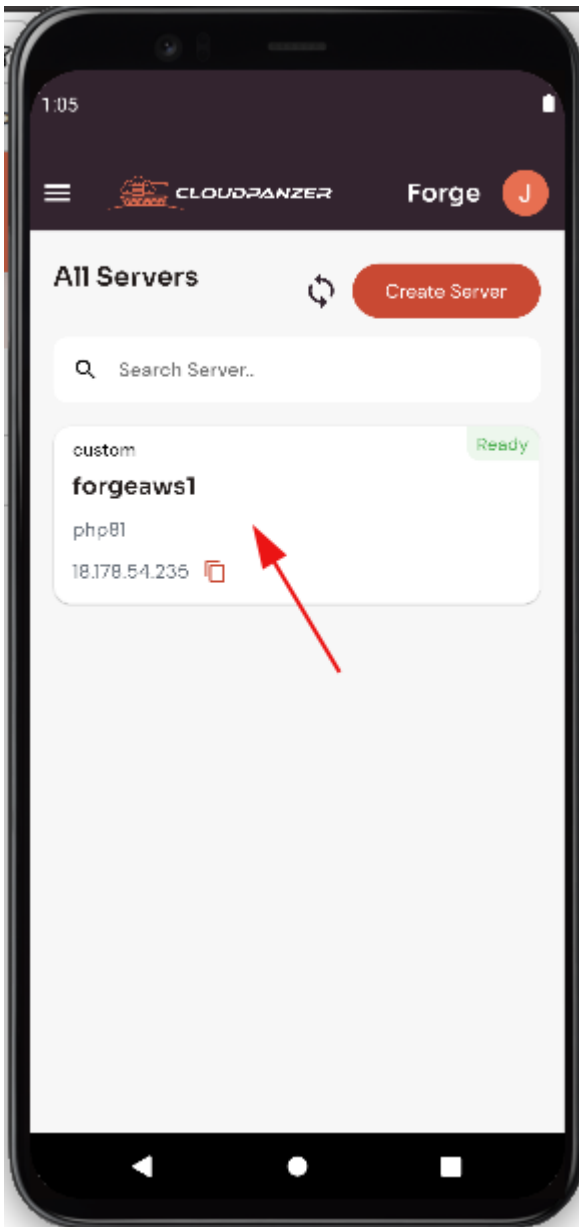
Php Forge

- [How to Config PHP Version Forge?](#)
- [How To Use An Older Version Of PHP forge?](#)
- [How to check PHP logs site forge?](#)
- [How to check PHP logs forge?](#)
- [How to Restart MySQL Service forge?](#)
- [How to Stop MySQL Service forge?](#)
- [How to change php configuration version on site forge?](#)
- [How to Site PHP configuration Restart PHP version forge?](#)
- [How to install new PHP configuration version on Site forge ?](#)
- [How to Navigate Server PHP Dashboard in Forge?](#)
- [How To Install An Older Version Of PHP in Forge?](#)
- [How To Restart An Older Version Of PHP in Forge?](#)
- [How To Check Events An Older Version Of PHP in Forge?](#)
- [How To Set default An Older Version Of PHP in Forge?](#)
- [How To Delete An Older Version Of PHP in Forge?](#)
- [How To FPM Config An Older Version Of PHP in Forge?](#)

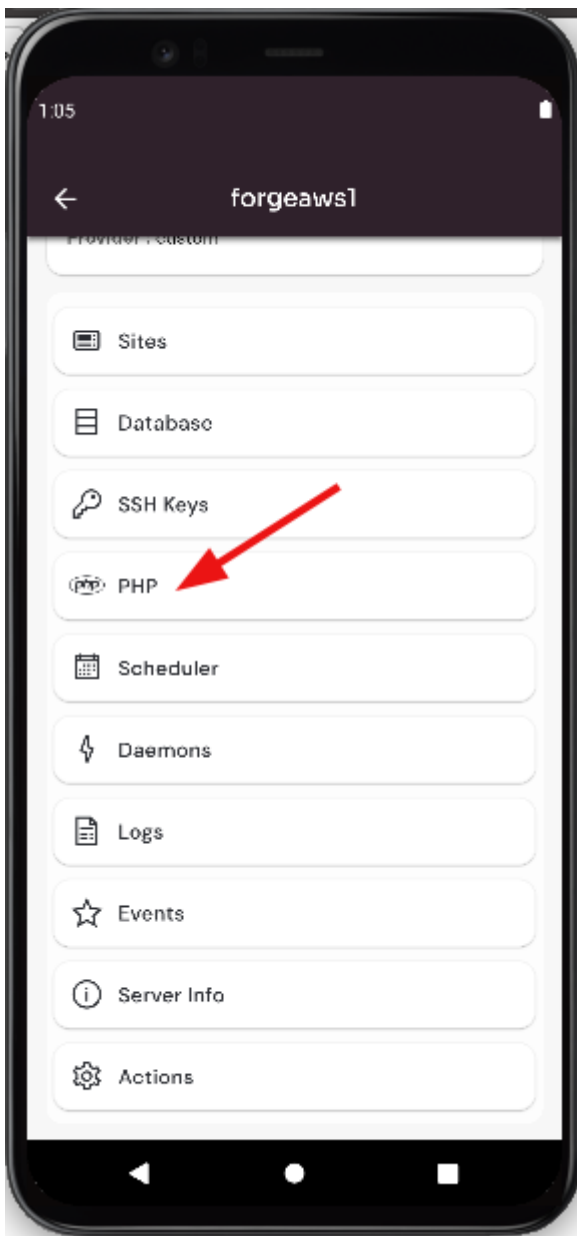
How to Config PHP Version Forge?

Follow the steps below Check the PHP version.

1: Once you are logged in, select "Forge" integration, look for a "Server" and click on it.



Click on the "PHP" button.

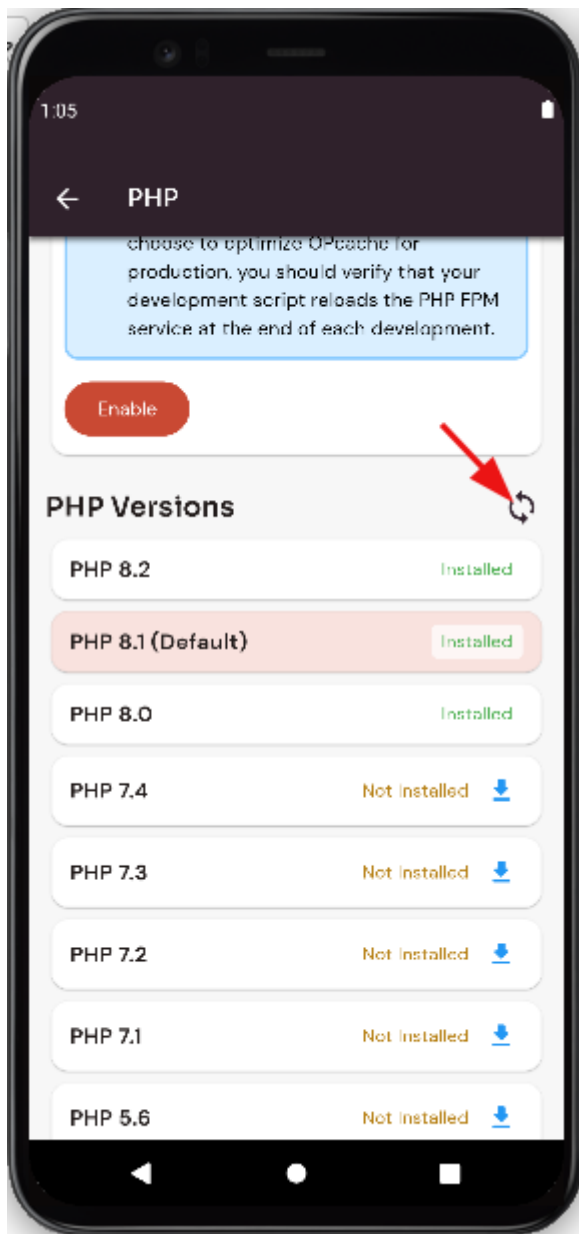


Here, you can see the PHP Versions.



Refresh Version :

Click on the "sync" icon.



How To Use An Older Version Of PHP forge?

Follow the steps below to Use An Older Version Of PHP in Forge.

Navigate to the Home Page of Forge

([Use this link to view How to Navigate](#)).

Use An Older Version Of PHP:

([Use this link to view Use An Older Version Of PHP](#)).

How to check PHP logs site forge?

Follow the steps below to check the PHP logs site in Forge.

Navigate to the Home Page of Forge

([Navigate to Forge Dashboard](#)).

Check the PHP logs site:

([Use this link to view the Check PHP logs site](#)).

How to check PHP logs forge?

Follow the steps below to check PHP logs.

Navigate to the Home Page of Forge

([Use this link to view How to Navigate](#)).

Check PHP logs:

([Use this link to view Check PHP logs](#)).

How to Restart MySQL Service forge?

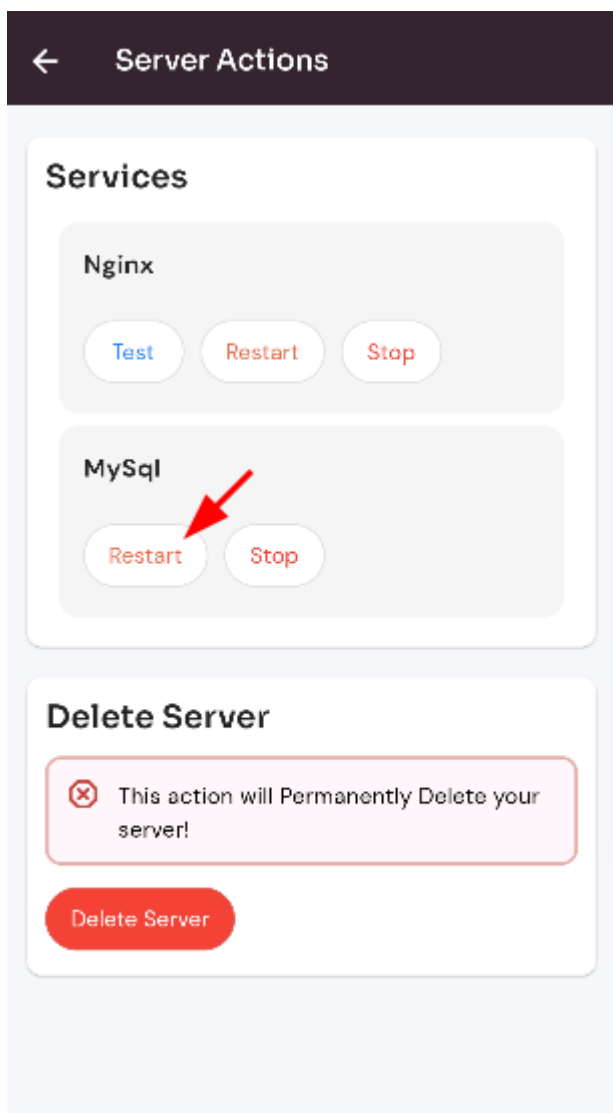
Follow the steps below to Restart MySQL Service.

Navigate to the Home Page of Forge

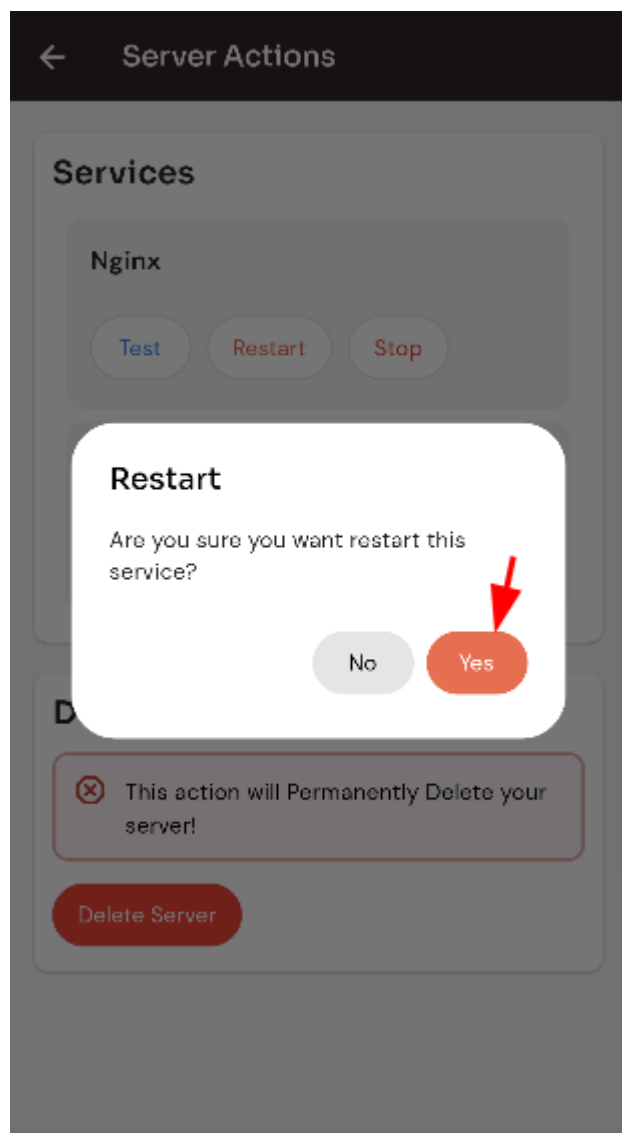
([Use this link to view How to Navigate](#)).

Restart MySQL Service:

Click on the Restart button.



Click on the Yes button.



Here, you can see MySQL Service has been restarted successfully.

How to Stop MySQL Service

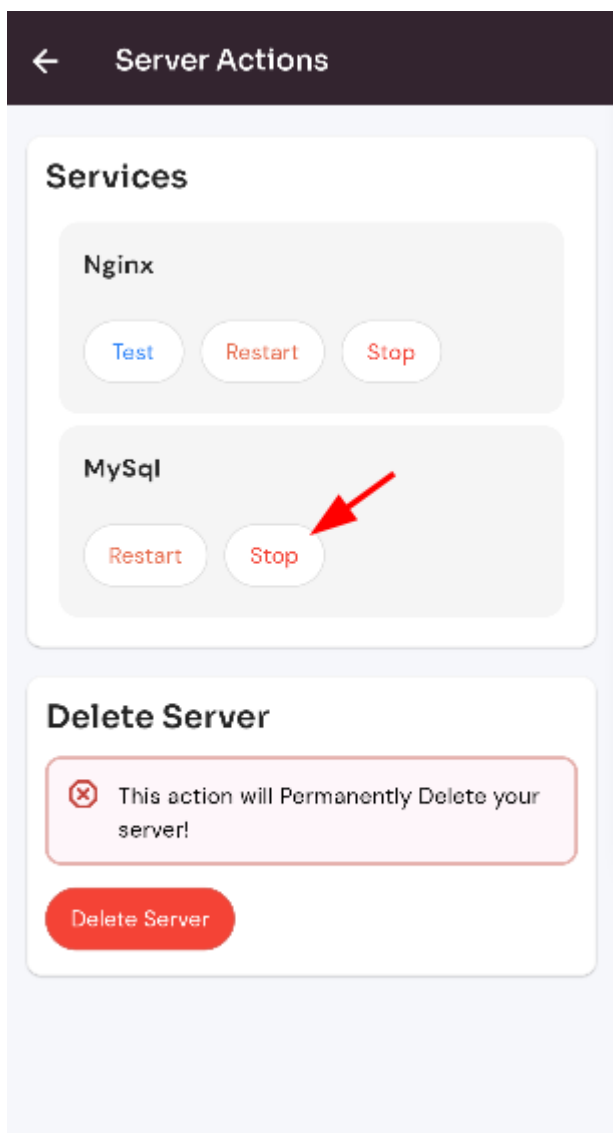
Follow the steps below to Stop MySQL Service.

Navigate to the Home Page of Forge

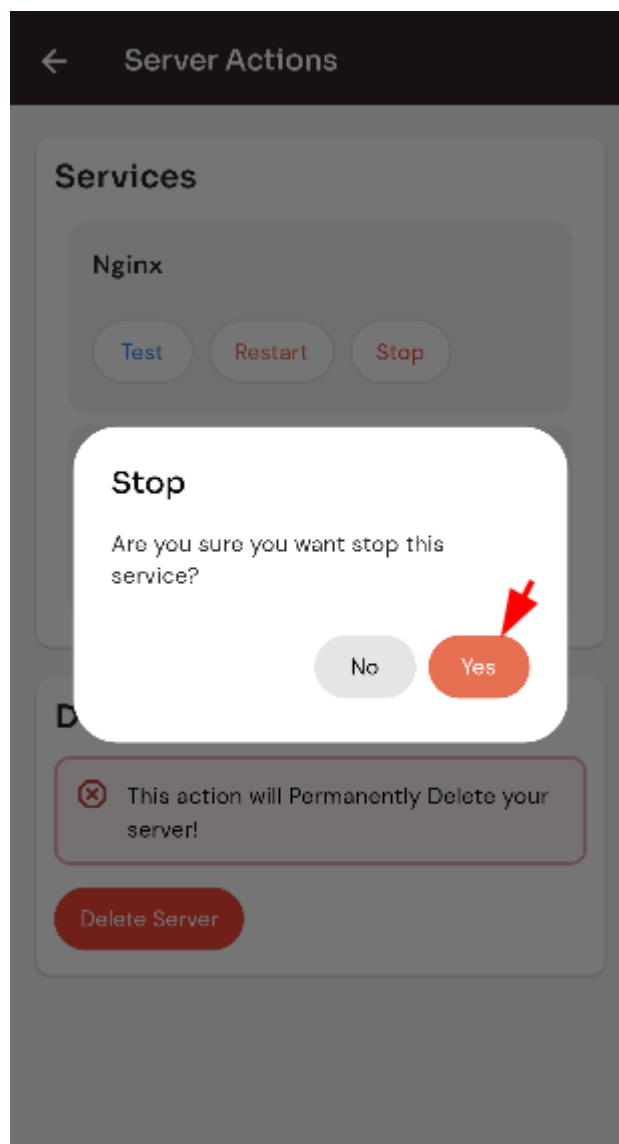
([Use this link to view How to Navigate](#)).

Stop MySQL Service:

Click on the Stop button.



Click on the yes button.



Here, you can see MySQL Service has been Stoped successfully.

How to change php configuration version on site forge?

Follow the steps below to change the PHP configuration version on the site.

Navigate to the Home Page of Forge

([Use this link to view How to Navigate](#)).

change the PHP configuration version on the site:

([Use this link to view change the PHP configuration version on the site](#)).

How to Site PHP configuration Restart PHP version forge?

Follow the steps below to Site PHP configuration Restart the PHP version.

Navigate to the Home Page of Forge

([Use this link to view How to Navigate](#)).

Site PHP configuration Restart the PHP version:

([Use this link to view Site PHP configuration Restart the PHP version](#)).

How to install new PHP configuration version on Site forge ?

Follow the steps below to the new PHP configuration version on the Site.

Navigate to the Server PHP Dashboard([Use this link to view How to Navigate](#)).

the new PHP configuration version on the Site:

([Use this link to view the new PHP configuration version on the Site](#)).

How to Navigate Server PHP Dashboard in Forge?

Navigate to the Home Page of Forge(Use this link to view How to Navigate Home Page of Forge).

Navigate to the Server PHP Dashboard(Use this link to view How to Navigate Server PHP Dashboard).

How To Install An Older Version Of PHP in Forge?

Navigate to the Server PHP Dashboard([Use this link to view How to Navigate](#)).

Install An Older Version Of PHP in Forge([Use this link to view How to Install An Older Version Of PHP in Forge](#)).

How To Restart An Older Version Of PHP in Forge?

Navigate to the Server PHP Dashboard([Use this link to view How to Navigate](#)).

Restart An Older Version Of PHP in Forge([Use this link to view How to Restart An Older Version Of PHP in Forge](#)).

How To Check Events An Older Version Of PHP in Forge?

Navigate to the Server PHP Dashboard([Use this link to view How to Navigate](#)).

Check Events An Older Version Of PHP in Forge([Use this link to view How to Check Events An Older Version Of PHP in Forge](#)).

How To Set default An Older Version Of PHP in Forge?

Navigate to the Server PHP Dashboard([Use this link to view How to Navigate](#)).

Set default An Older Version Of PHP in Forge([Use this link to view How to Set default An Older Version Of PHP in Forge](#)).

How To Delete An Older Version Of PHP in Forge?

Navigate to the Server PHP Dashboard([Use this link to view How to Navigate](#)).

Delete An Older Version Of PHP in Forge([Use this link to view How to Delete An Older Version Of PHP in Forge](#)).

How To FPM Config An Older Version Of PHP in Forge?

Navigate to the Server PHP Dashboard([Use this link to view How to Navigate](#)).

FPM Config An Older Version Of PHP in Forge([Use this link to view How to FPM Config An Older Version Of PHP in Forge](#)).