

Server Forge

- [How to Change Forge Server Action forge?](#)
- [How to check the server Activity forge?](#)
- [How to delete server permanently forge?](#)
- [How to Create Scheduler in forge?](#)
- [How to check events forge?](#)
- [How to generate server public key forge?](#)
- [How to change server username forge?](#)
- [How to change Server Metadata forge?](#)
- [How to Restart a Server forge?](#)
- [How to Config MariaDB Forge?](#)
- [How to Delete Protection Forge?](#)
- [How to Delete Server Forge?](#)
- [How to check Scheduler Events Forge?](#)
- [How to Delete Scheduler in Forge?](#)

How to Change Forge Server Action forge?

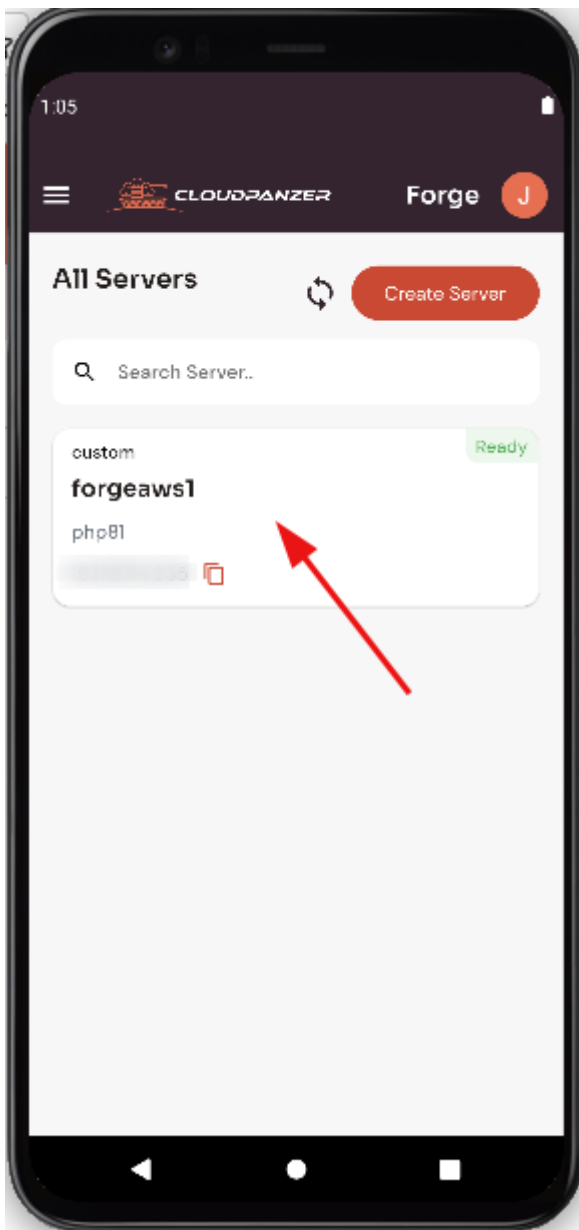
Tutorial :

You can watch the Video or Continue reading the post.

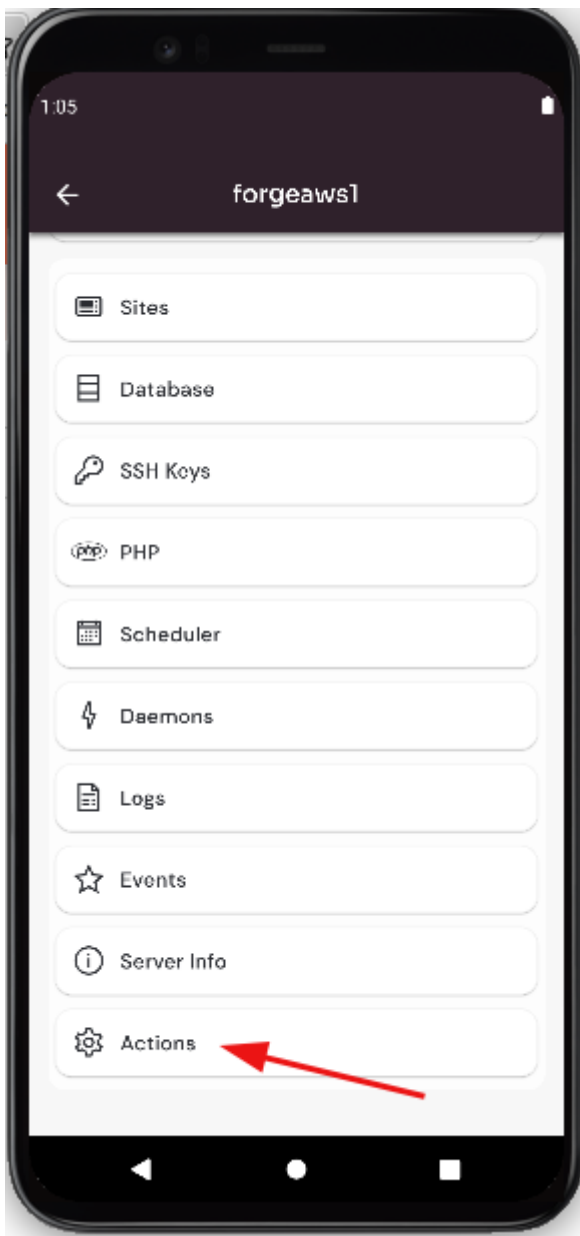
https://www.youtube.com/embed/CA8CuvFsf_0

Follow the steps below Change Forge Server Action

Once logged in, select "Forge" integration, look for a "Server" and click on it.

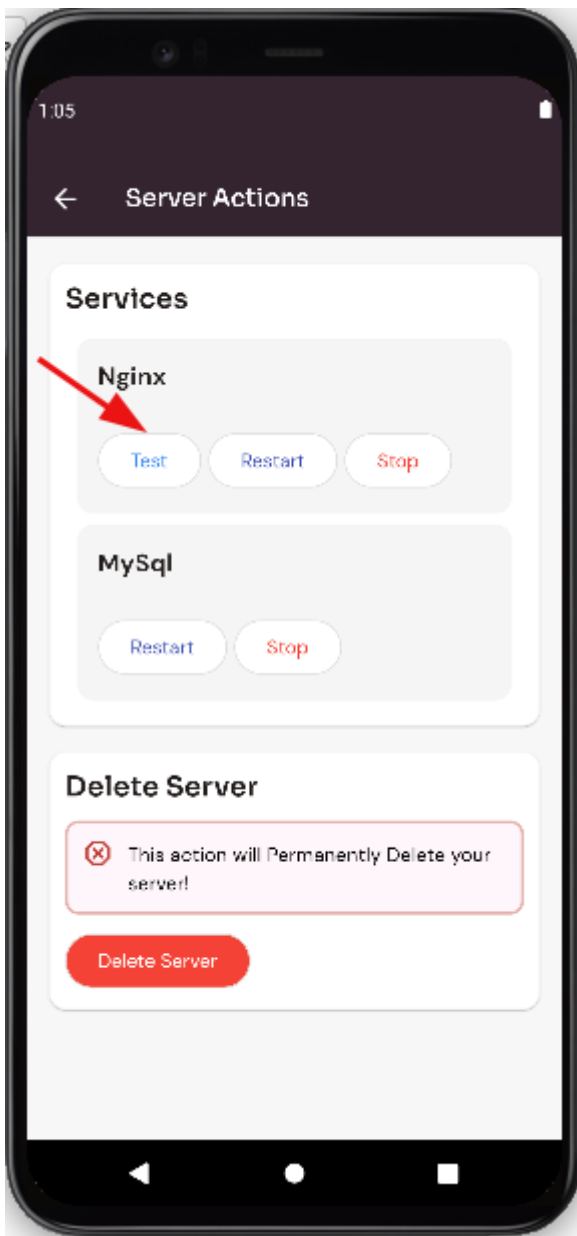


Click on the "Actions" button.

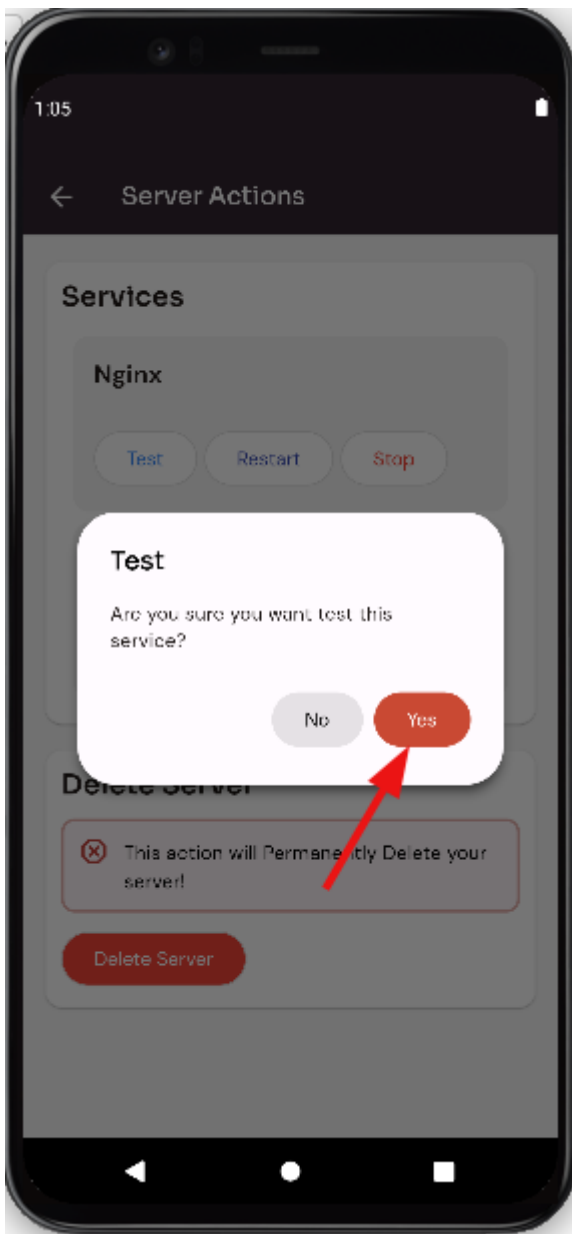


Test Nginx Service :

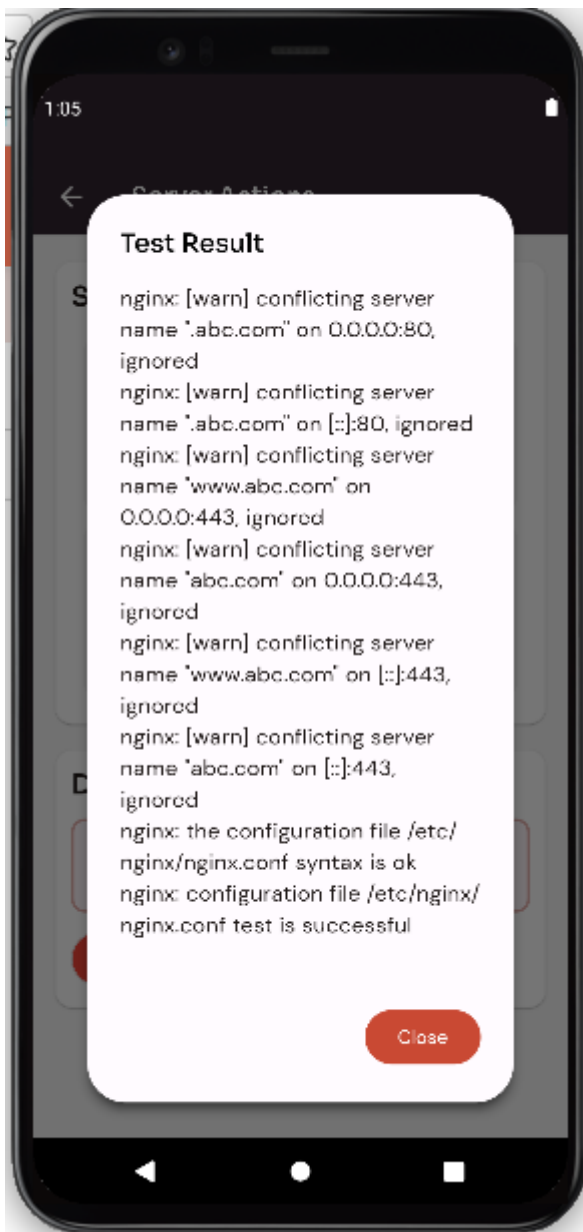
Click on the "Test" button.



Click on the yes button.

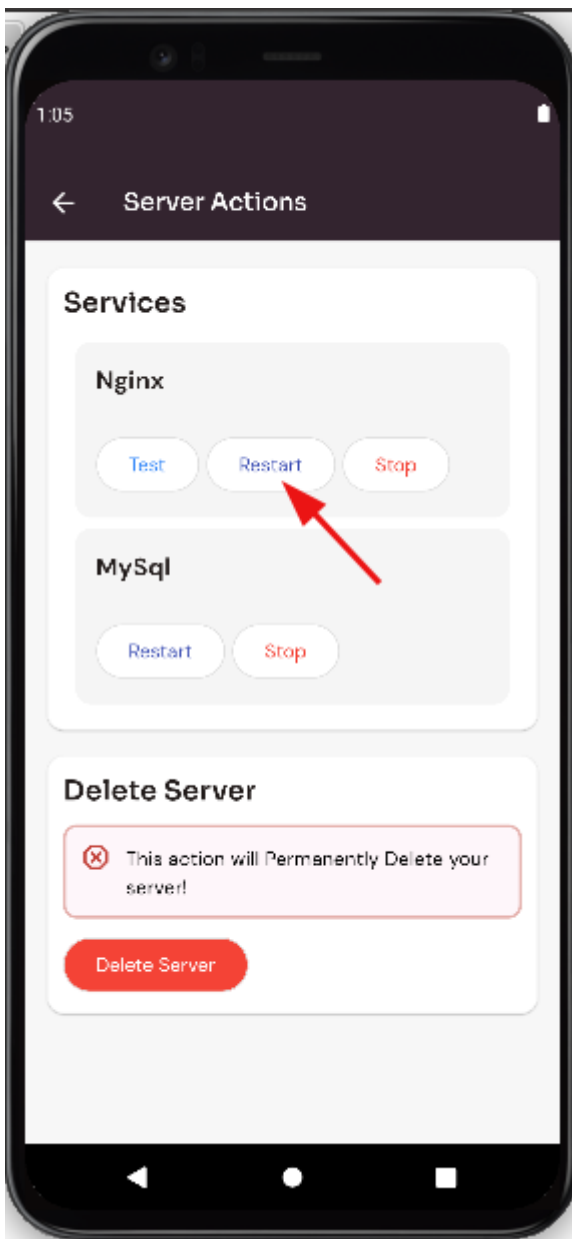


Here, you can see the test result.

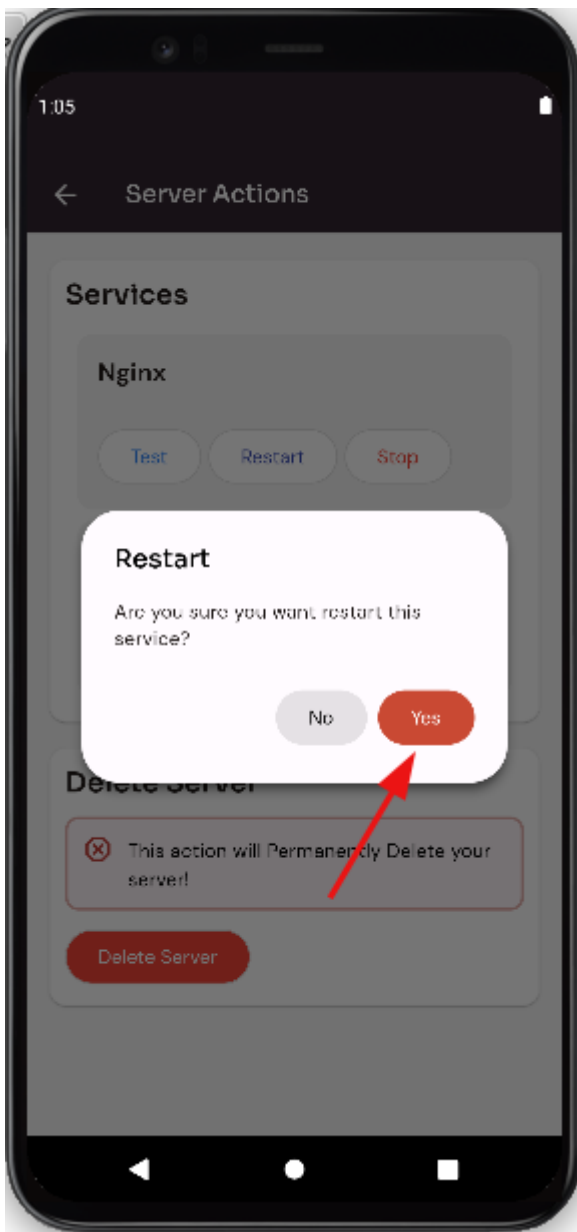


Restart Nginx Service :

Click on the "Restart" button.



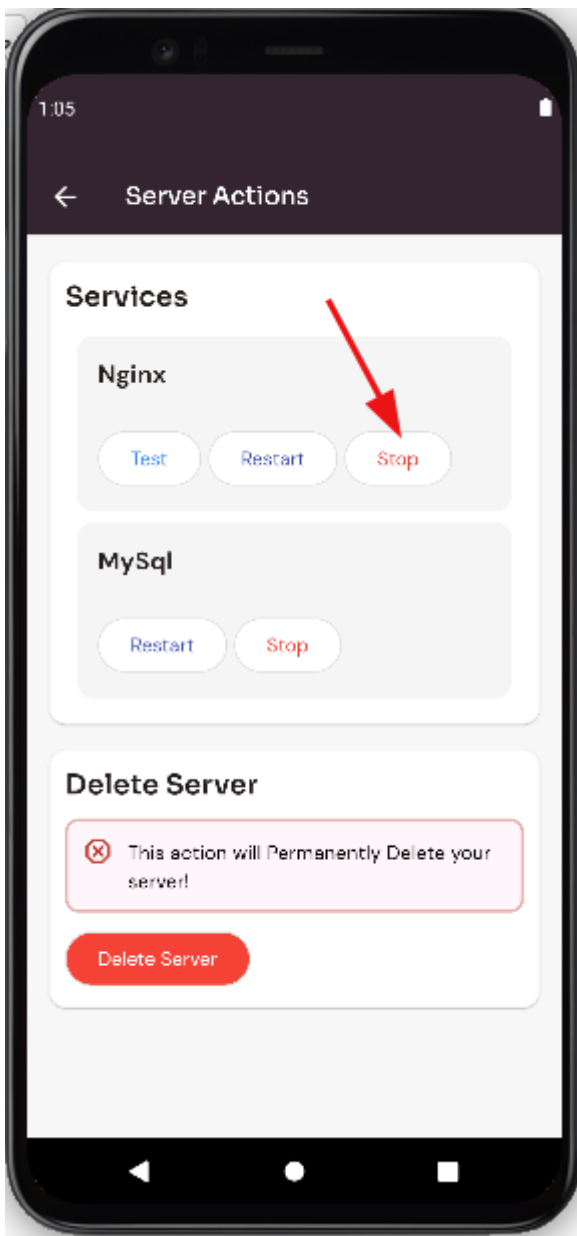
Click on the yes button.



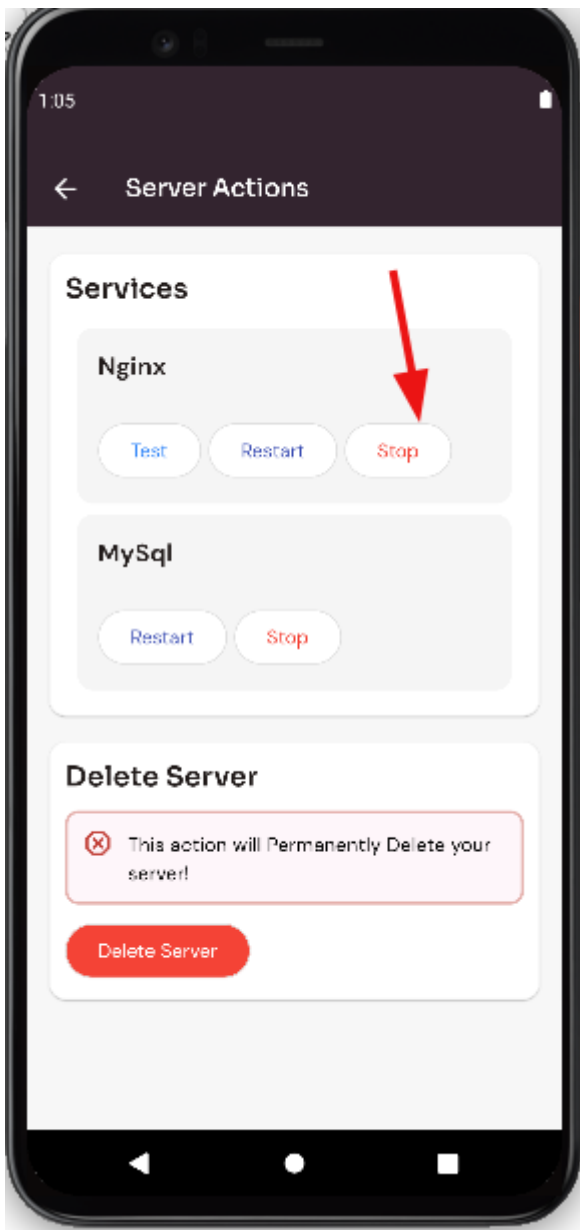
Here, you can see the server restarted successfully.

Stop Nginx Service :

Click on the "Stop" button.



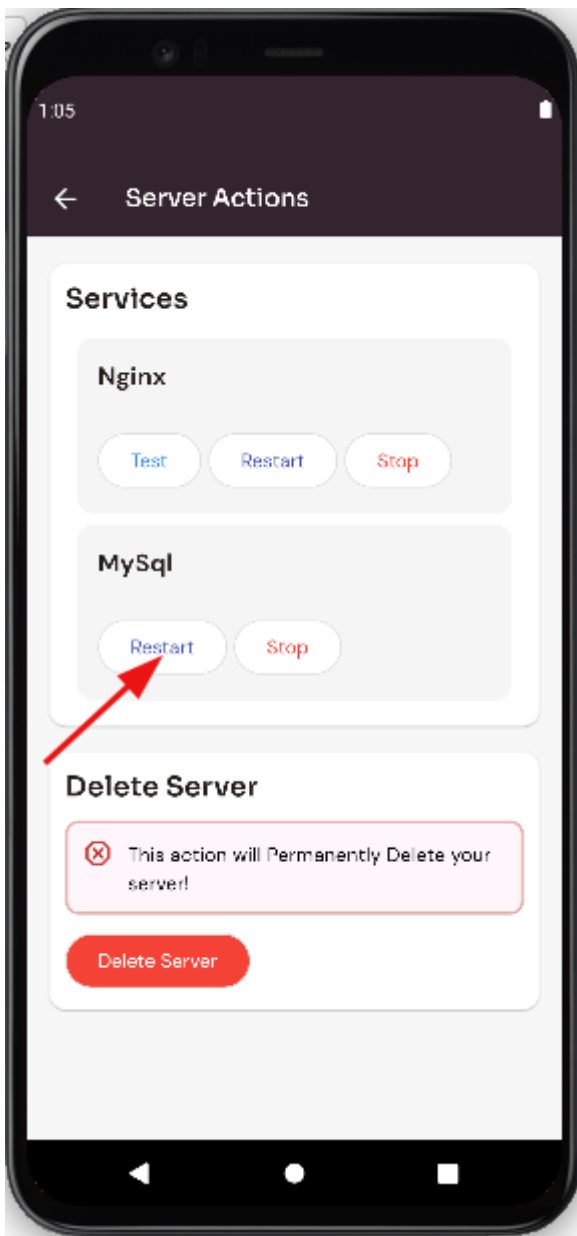
Click on the yes button.



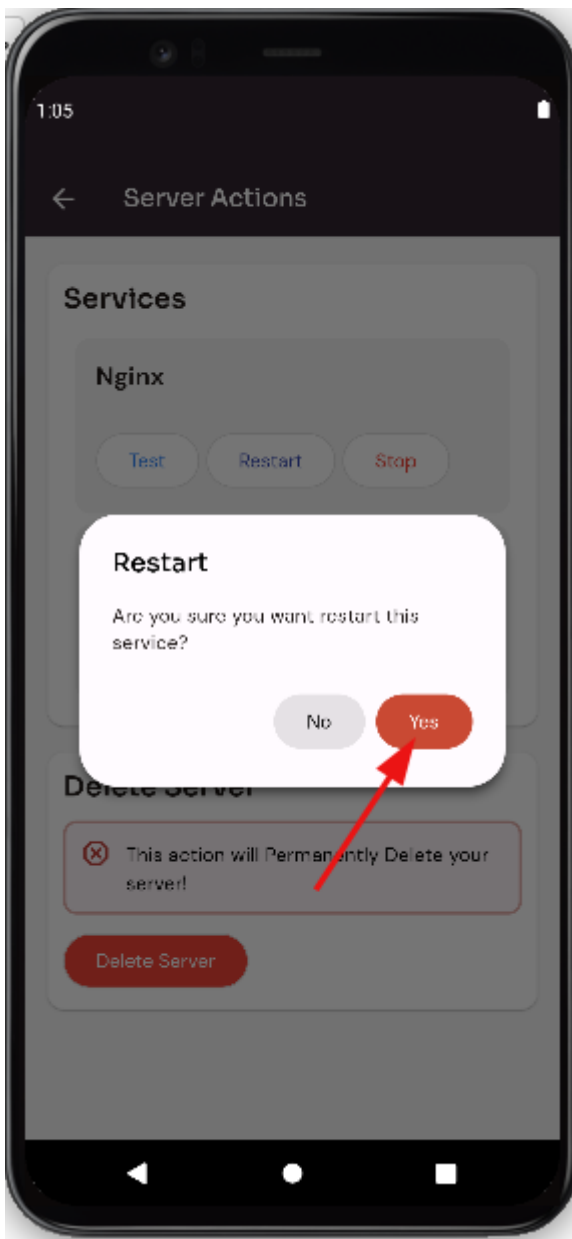
Here, you can see the server stopped successfully.

Restart Mysql Service :

Click on the "Restart" button.



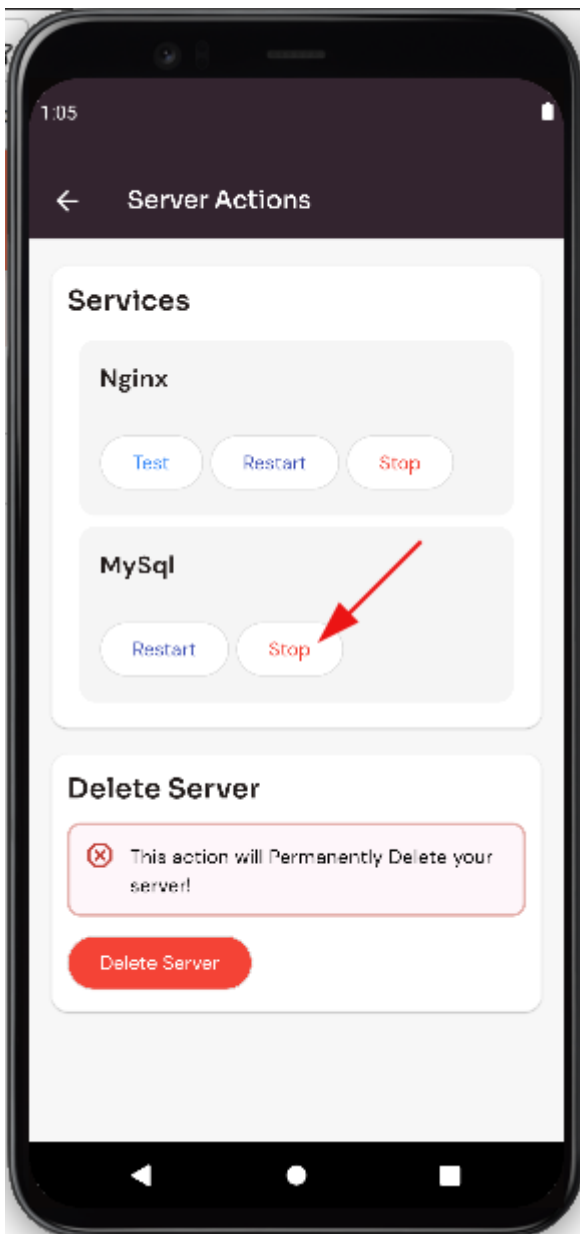
Click on the yes button.



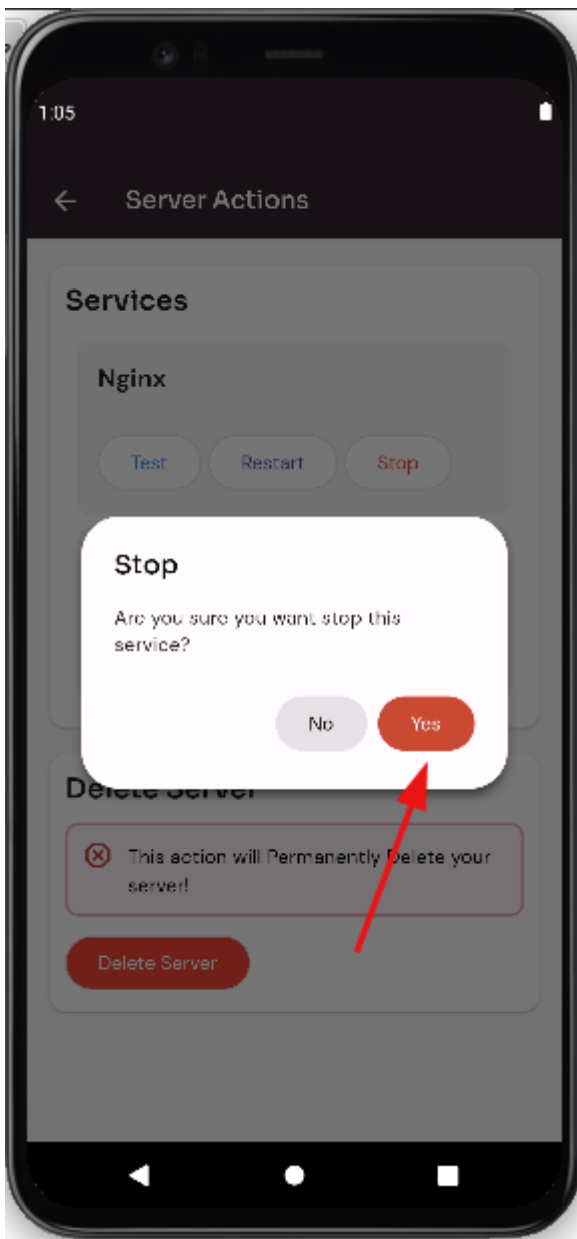
Here, you can see the server restarted successfully.

Stop Mysql Service :

Click on the "Stop" button.



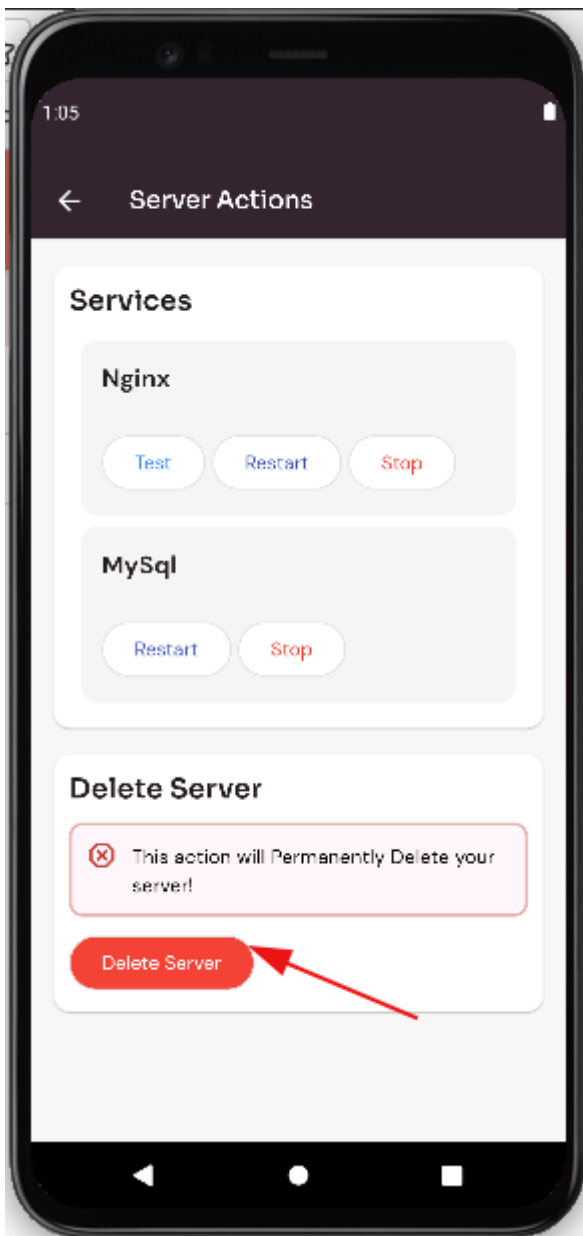
Click on the yes button.



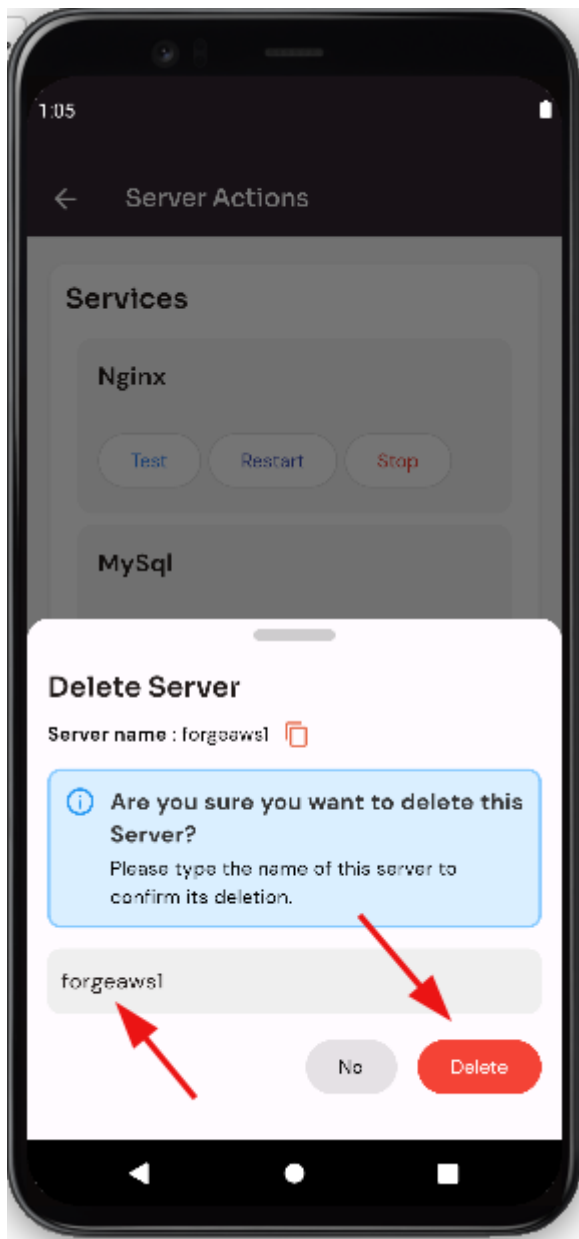
Here, you can see the server stopped successfully.

Delete Server :

Click on the "Delete Server" button.



Enter the server name and Click on the "Delete" button.



How to check the server Activity forge?

Follow the steps below to check the server Activity.

Navigate to the Home Page of Forge

([Use this link to view How to Navigate](#)).

Check the server Activity:

([Use this link to view Check the server Activity](#)).

How to delete server permanently forge?

Follow the steps below to delete the server permanently.

Navigate to the Home Page of Forge

([Use this link to view How to Navigate](#)).

delete server permanently:

([Use this link to view deleted server permanently](#)).

How to Create Scheduler in forge?

Follow the steps below to Create a Scheduler in forge.

Navigate to the Home Page of Forge

([Use this link to view How to Navigate](#)).

Create Scheduler in the forge:

([Use this link to Create a scheduler](#)).

How to check events forge?

Follow the steps below to check events.

Navigate to the Home Page of Forge

([Use this link to view How to Navigate](#)).

Check events:

([Use this link to view check events](#)).

How to generate server public key forge?

Follow the steps below to generate the server public key forge

Navigate to the Home Page of Forge

([Use this link to view How to Navigate](#)).

Server Info Server Public key:

([Use this link to view Server Info Server Public key](#)).

How to change server username forge?

Follow the steps below to change the server username.

Navigate to the Home Page of Forge

([Use this link to view How to Navigate](#)).

Server Info Server Username:

([Use this link to view Server Info Server Username](#)).

How to change Server Metadata forge?

Follow the steps below to change Server Metadata forge.

Navigate to the Home Page of Forge

([Use this link to view How to Navigate](#)).

check Server Info Server Metadata:

([Use this link to view and check Server Info Server Metadata](#)).

How to Restart a Server forge?

Follow the steps below to Restart a Server.

Navigate to the Home Page of Forge

([Use this link to view How to Navigate](#)).

Restart a Server:

([Use this link to view Restart a Server](#)).

How to Config MariaDB Forge?

Follow the steps below to Config MariaDB.

Navigate to the Home Page of Forge

([Use this link to view How to Navigate](#)).

Config MariaDB:

([Use this link to view Config MariaDB](#)).

How to Delete Protection Forge?

Follow the steps below to Delete Protection.

Navigate to the Home Page of Forge

([Use this link to view How to Navigate](#)).

Delete Protection:

([Use this link to view Delete Protection](#)).

How to Delete Server Forge?

Follow the steps below to Delete Server.

Navigate to the Home Page of Forge

([Use this link to view How to Navigate](#)).

Delete Server:

([Use this link to view Delete Server](#)).

How to check Scheduler Events Forge?

Follow the steps below to check Scheduler Events.

Navigate to the Home Page of Forge

([Use this link to view How to Navigate](#)).

Check Scheduler Events:

([Use this link to view Check Scheduler](#)).

How to Delete Scheduler in Forge?

Deleting a scheduler is a permanent action and cannot be undone. Make sure you really want to delete the scheduler before proceeding.

Follow the steps below to Delete Scheduler in forge.

Navigate to the Home Page of Forge

([Use this link to view How to Navigate](#)).

Delete Scheduler in the forge:

([Use this link to Delete a scheduler](#)).