

Forge Mobile

- Nginx Forge

- [How to check site log Nginx error?](#)
- [How to check Nginx access site logs?](#)
- [How to check Nginx Error Logs?](#)
- [How to change web directory on Site ?](#)
- [How to change site domain ?](#)
- [How to add Aliases on site?](#)
- [How to use Nginx actions on server?](#)

- Php Forge

- [How to Config PHP Version Forge?](#)
- [How To Use An Older Version Of PHP forge?](#)
- [How to check PHP logs site forge?](#)
- [How to check PHP logs forge?](#)
- [How to Restart MySQL Service forge?](#)
- [How to Stop MySQL Service forge?](#)
- [How to change php configuration version on site forge?](#)
- [How to Site PHP configuration Restart PHP version forge?](#)
- [How to install new PHP configuration version on Site forge ?](#)
- [How to Navigate Server PHP Dashboard in Forge?](#)
- [How To Install An Older Version Of PHP in Forge?](#)
- [How To Restart An Older Version Of PHP in Forge?](#)
- [How To Check Events An Older Version Of PHP in Forge?](#)
- [How To Set default An Older Version Of PHP in Forge?](#)
- [How To Delete An Older Version Of PHP in Forge?](#)
- [How To FPM Config An Older Version Of PHP in Forge?](#)

- Database Forge

- [How to create database forge?](#)
- [How to create database user forge?](#)
- [How to delete database forge?](#)
- [How to delete database user forge?](#)
- [How to edit database user forge?](#)
- [How to Change Manage Redis Password forge?](#)
- [How to Check Detail forge?](#)

- Aliases Forge

- [How to add Shell Aliases to the site in forge?](#)
- [How to add form groups in site Shell Settings Forge?](#)
- [How to delete Shell Aliases data on Site Shell Settings forge?](#)
- [How to edit Shell Aliases on the site shell setting forge?](#)

- Server Forge

- [How to Change Forge Server Action forge?](#)
- [How to check the server Activity forge?](#)
- [How to delete server permanently forge?](#)
- [How to Create Scheduler in forge?](#)
- [How to check events forge?](#)
- [How to generate server public key forge?](#)
- [How to change server username forge?](#)
- [How to change Server Metadata forge?](#)
- [How to Restart a Server forge?](#)
- [How to Config MariaDB Forge?](#)
- [How to Delete Protection Forge?](#)
- [How to Delete Server Forge?](#)
- [How to check Scheduler Events Forge?](#)
- [How to Delete Scheduler in Forge?](#)

- Sites Forge

- [How to create a site for Forge?](#)
- [How to run a Command Forge?](#)

- [How to check site events Forge?](#)
- [How to delete a site Forge?](#)
- [How to Delete Site Protection Forge?](#)
- [How to Site Shell Settings SH Forge?](#)
- [Forge Mobile App](#)
 - [How to Navigate Forge Home?](#)
 - [How to check Redis Logs in Forge?](#)
- [App on a domain Forge](#)
 - [How to Word Press Verify Check Sums Forge?](#)
 - [Install PHPMy Admin on a domain Forge?](#)
 - [How to Navigate to the app from Forge Dashboard?](#)
 - [How to Enable Delete Protection on a Site?](#)
 - [How to Enable Maintenance Mode on a Site Forge?](#)
 - [How to Enable Permission app on a domain Forge?](#)
 - [How to Migrate Domain app on a domain Forge?](#)
 - [How to Uninstall App on a Site Forge?](#)
 - [How to Disable App on a Site Forge?](#)
 - [Install WordPress on a Domain Forge.](#)
 - [Install GitRepository on a Domain Froge.](#)
- [Site Environment Forge](#)
 - [GitRepository Site Environment Forge](#)
 - [How to Navigate to the Site Environment From Dashboard Forge?](#)
 - [WordPress Site Environment Forge](#)
 - [PHP My Admin Site Environment Forge](#)
 - [How to backup of Site Environment Forge?](#)
- [SSH Key Forge](#)
 - [How to Add SSH Keys in Forge?](#)
 - [How to Edit SSH Keys in Forge?](#)
 - [How to Delete SSH Keys in Forge?](#)
- [Daemon Forge](#)

- [How to Create Deamon Forge?](#)
- [How to Start Deamon Forge?](#)
- [How to Stop Deamon Forge?](#)
- [How to Restart Deamon Forge?](#)
- [How to Edit supervisor conf in Daemons Forge?](#)

Nginx Forge

How to check site log Nginx error?

Follow the steps below to check the site log Nginx error in Forge.

Navigate to the Home Page of Forge

([Use this link to view How to Navigate](#)).

check site log Nginx error:

([Use this link to view check site log Nginx error](#)).

How to check Nginx access site logs?

Follow the steps below to check Nginx access site logs in Forge.

Navigate to the Home Page of Forge

([Use this link to view How to Navigate](#)).

check Nginx access site logs:

([Use this link to view and check Nginx access site logs](#)).

How to check Nginx Error Logs?

Follow the steps below to check Nginx Error Logs.

Navigate to the Home Page of Forge

([Use this link to view How to Navigate](#)).

check Nginx Error Logs:

([Use this link to view Nginx Error Logs](#)).

How to change web directory on Site ?

Follow the steps below to change the web directory on the Site in Forge.

Navigate to the Home Page of Forge

([Use this link to view How to Navigate](#)).

change web directory on Site:

([Use this link to view how to change the web directory on the Site](#)).

How to change site domain ?

Follow the steps below to change the site domain in Forge.

Navigate to the Home Page of Forge

([Use this link to view How to Navigate](#)).

Change site domain:

([Use this link to view How to change the site domain](#)).

How to add Aliases on site?

Follow the steps below to add Aliases on-site in Forge.

Navigate to the Home Page of Forge

([Use this link to view How to Navigate](#)).

add Aliases on site:

([Use this link to view how to add Aliases on the site](#)).

How to use Nginx actions on server?

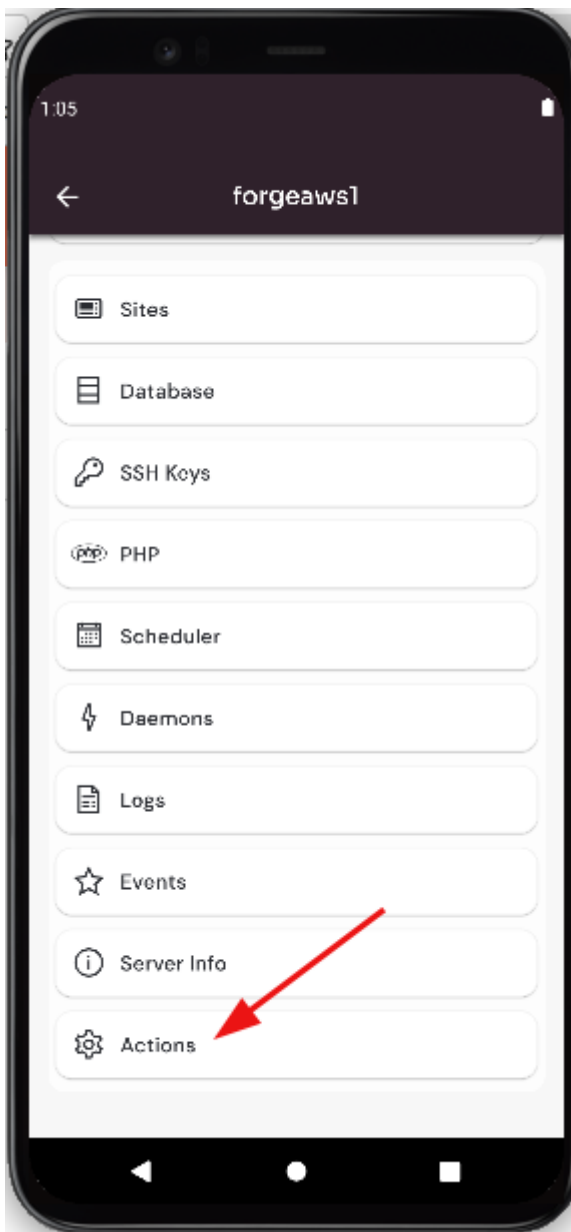
Follow the steps below to use Nginx actions on the server in Forge.

Navigate to the Home Page of Forge

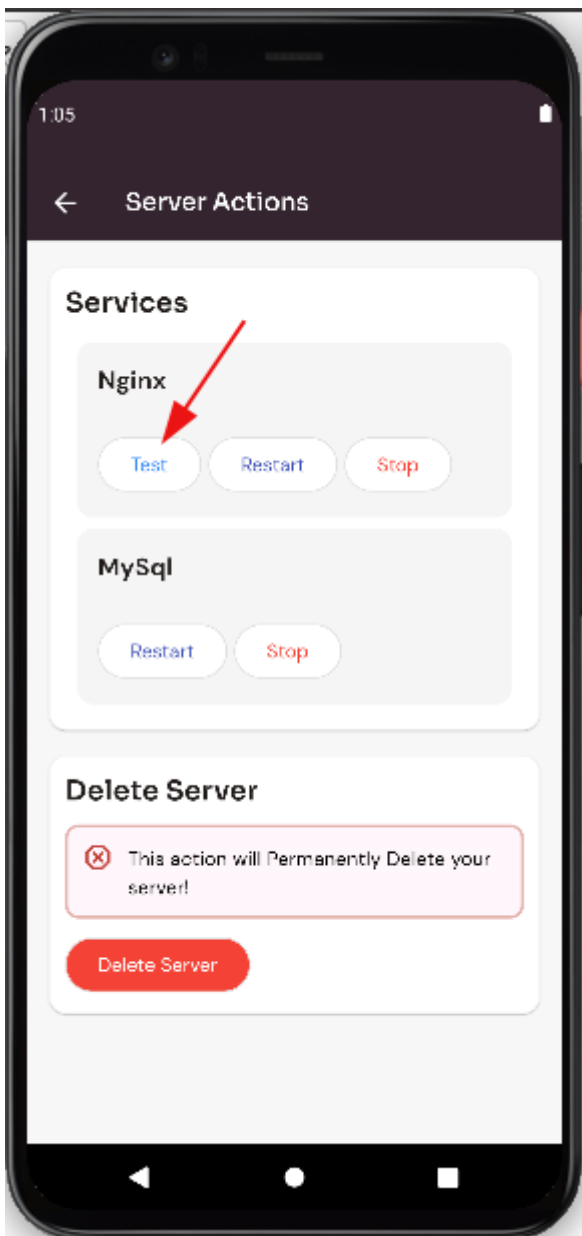
([Use this link to view How to Navigate](#)).

use Nginx actions on the server:

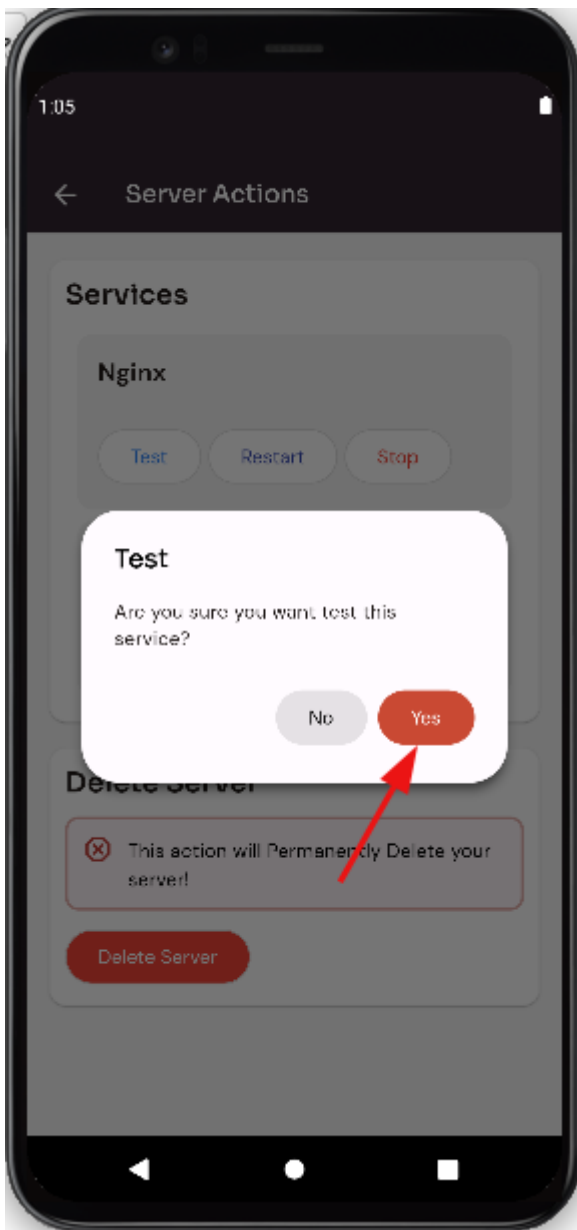
1. Select the Actions option.



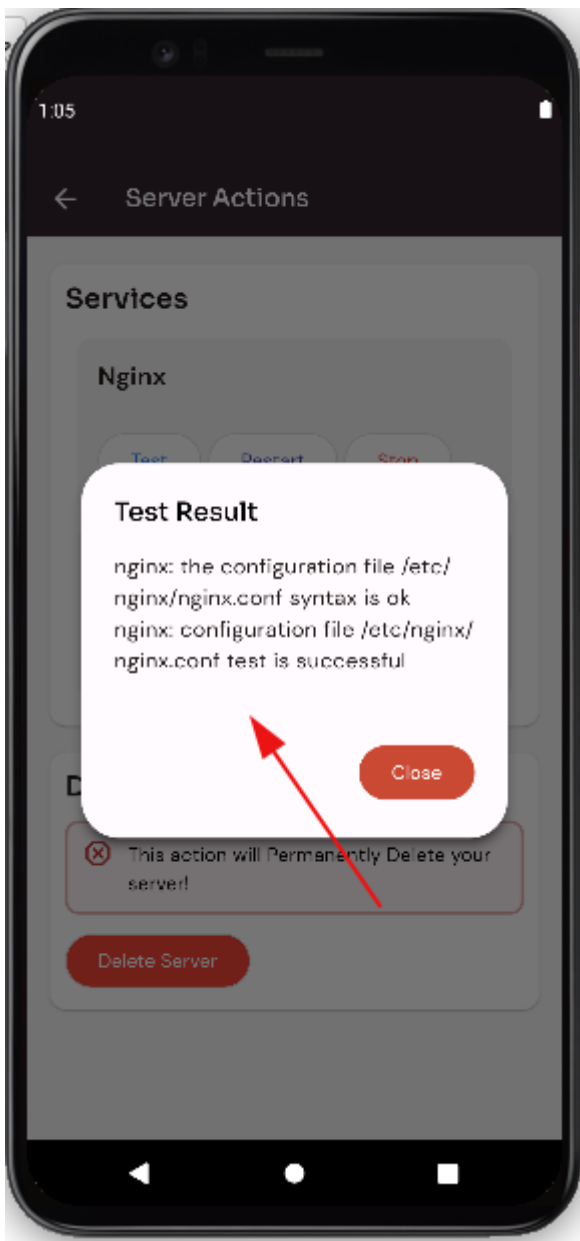
2. Click on the Test button.



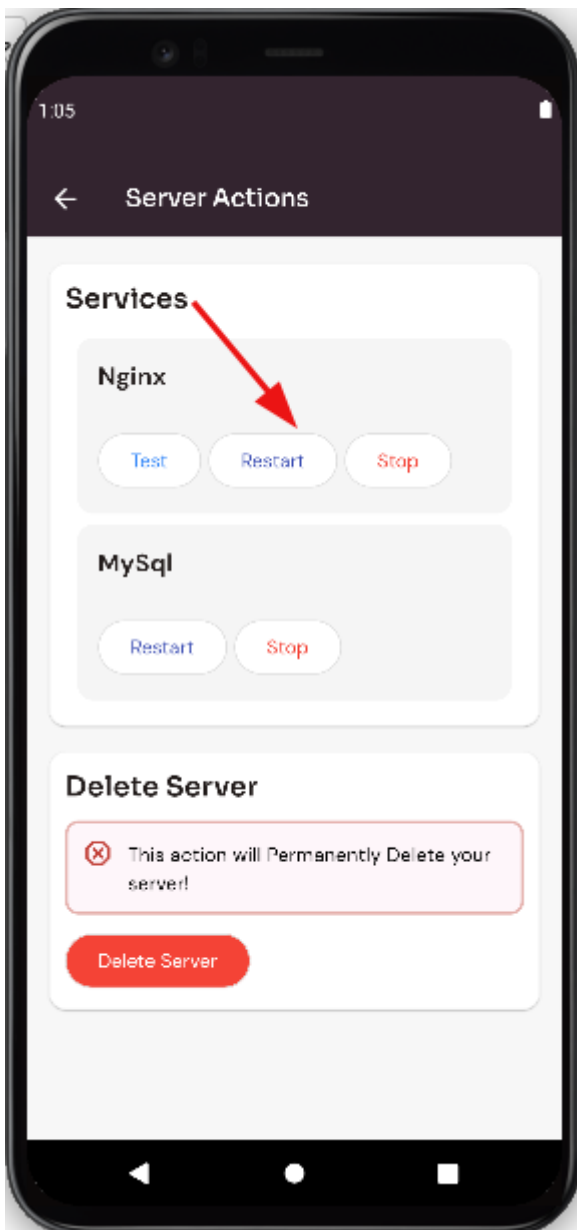
3. Click on the yes button to Test Nginx Service.



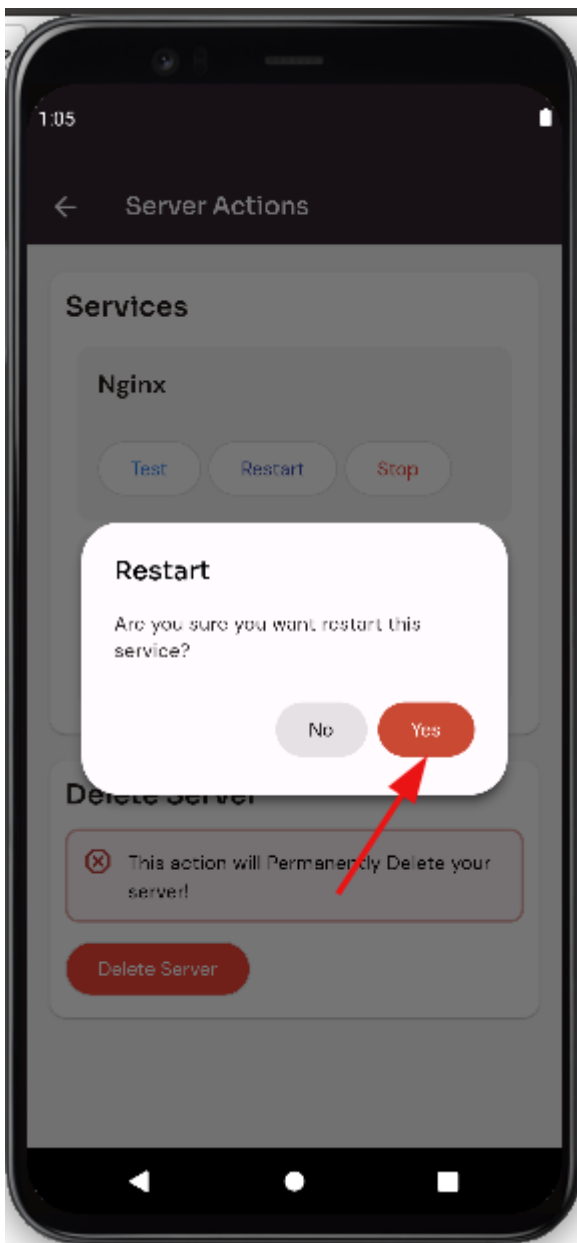
Here, you can see Test Nginx successfully.



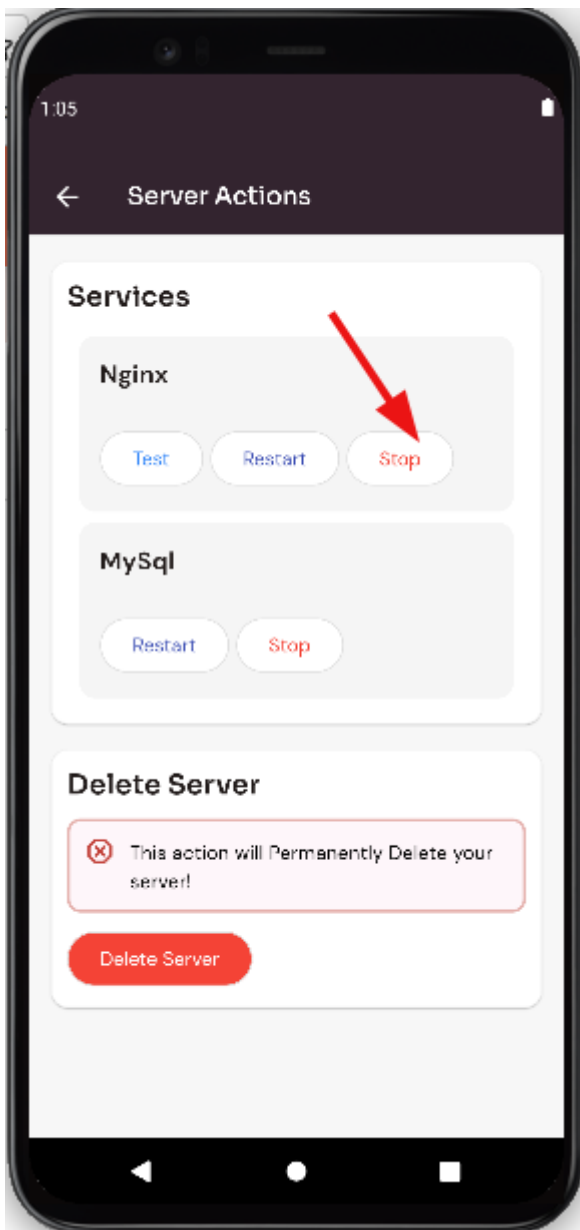
4. Click on the Restart button.



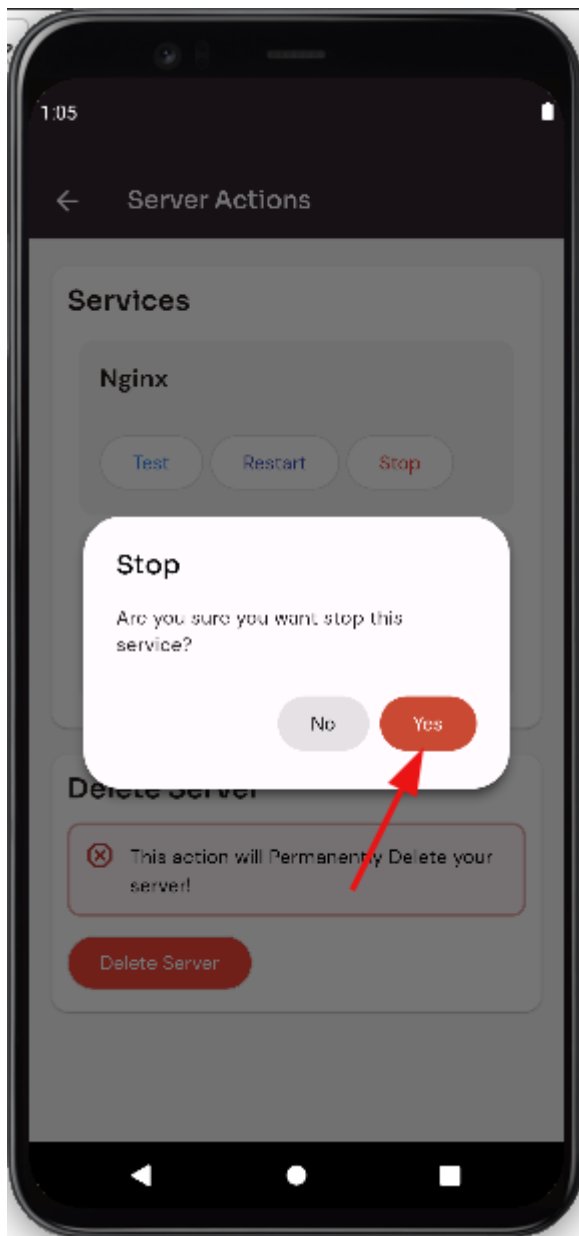
5. Click on the yes button to restart nginx.



6. Click on the Stop button.



7. Click on the yes button to stop Nginx.

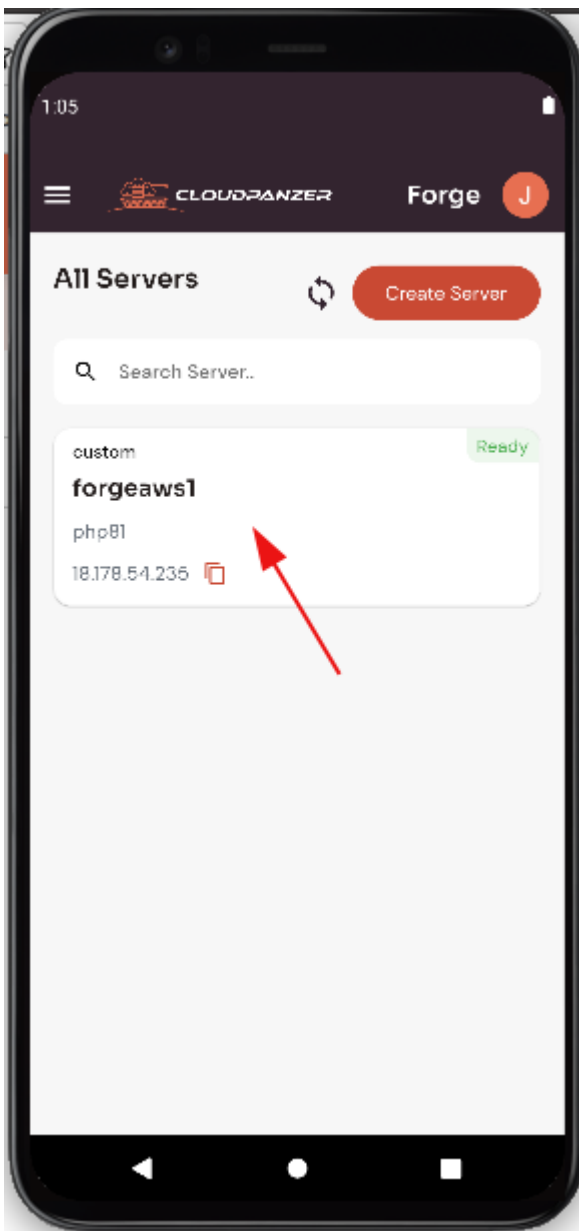


Php Forge

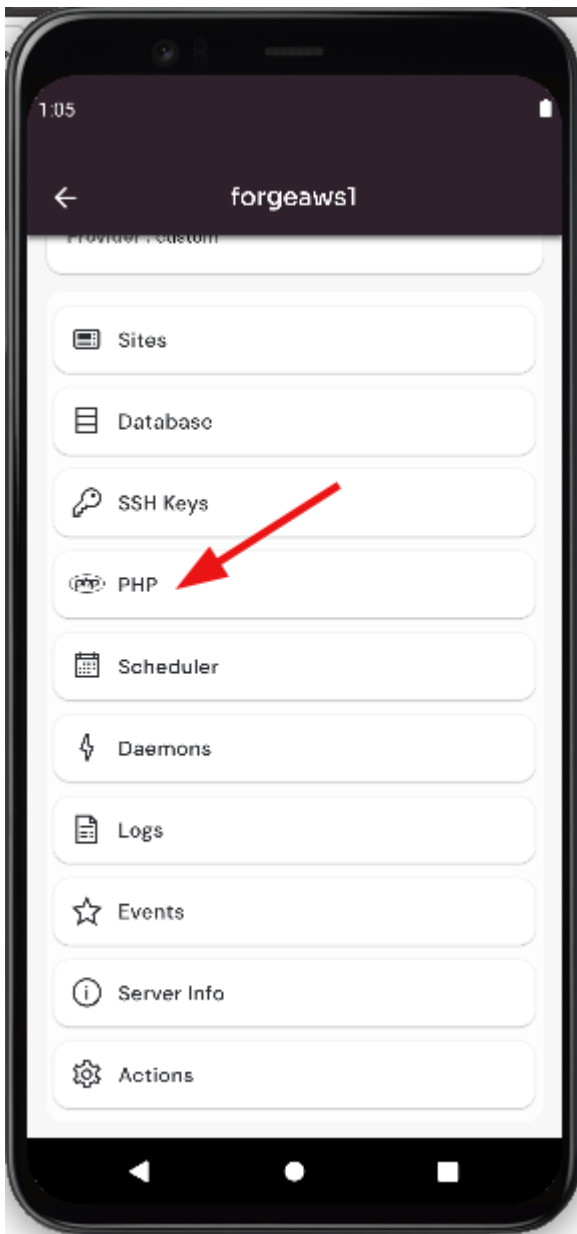
How to Config PHP Version Forge?

Follow the steps below Check the PHP version.

1: Once you are logged in, select "Forge" integration, look for a "Server" and click on it.



Click on the "PHP" button.

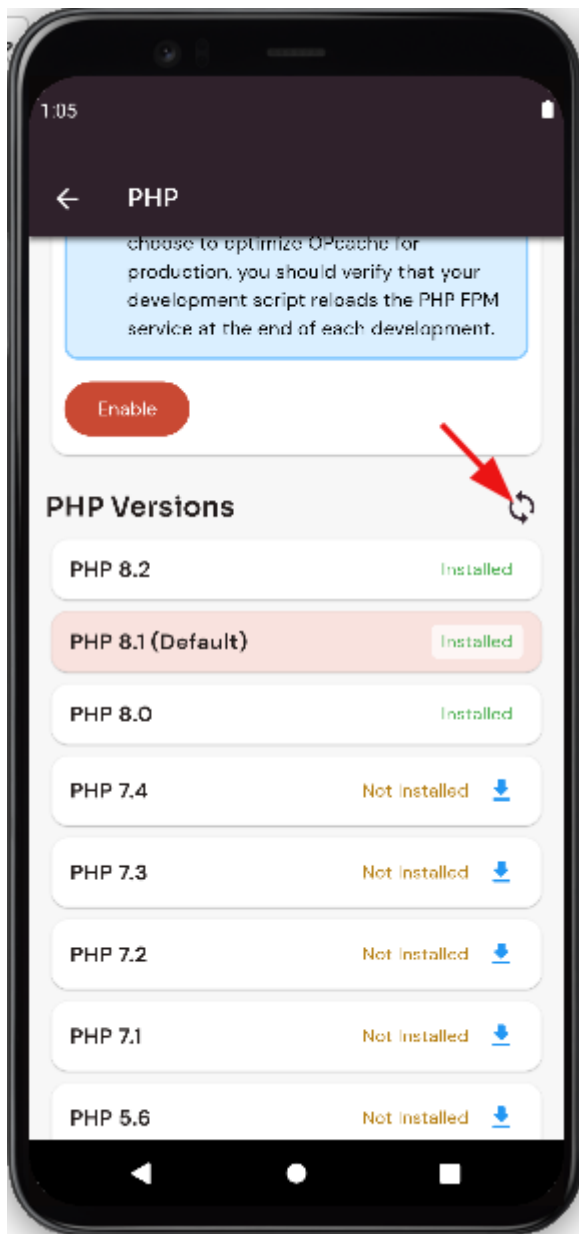


Here, you can see the PHP Versions.



Refresh Version :

Click on the "sync" icon.



How To Use An Older Version Of PHP forge?

Follow the steps below to Use An Older Version Of PHP in Forge.

Navigate to the Home Page of Forge

([Use this link to view How to Navigate](#)).

Use An Older Version Of PHP:

([Use this link to view Use An Older Version Of PHP](#)).

How to check PHP logs site forge?

Follow the steps below to check the PHP logs site in Forge.

Navigate to the Home Page of Forge

([Navigate to Forge Dashboard](#)).

Check the PHP logs site:

([Use this link to view the Check PHP logs site](#)).

How to check PHP logs forge?

Follow the steps below to check PHP logs.

Navigate to the Home Page of Forge

([Use this link to view How to Navigate](#)).

Check PHP logs:

([Use this link to view Check PHP logs](#)).

How to Restart MySQL Service forge?

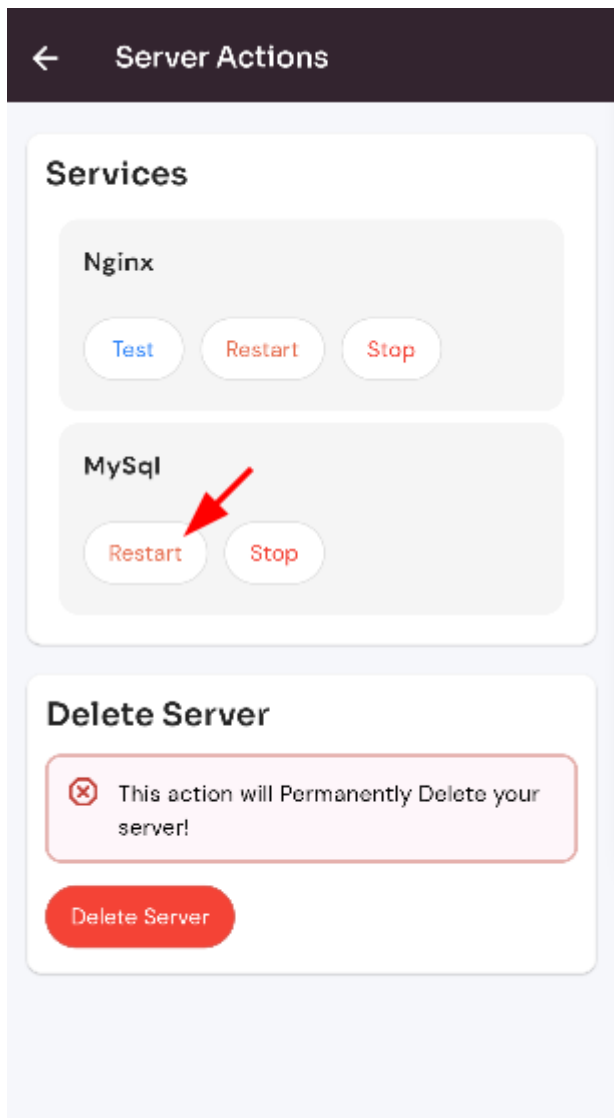
Follow the steps below to Restart MySQL Service.

Navigate to the Home Page of Forge

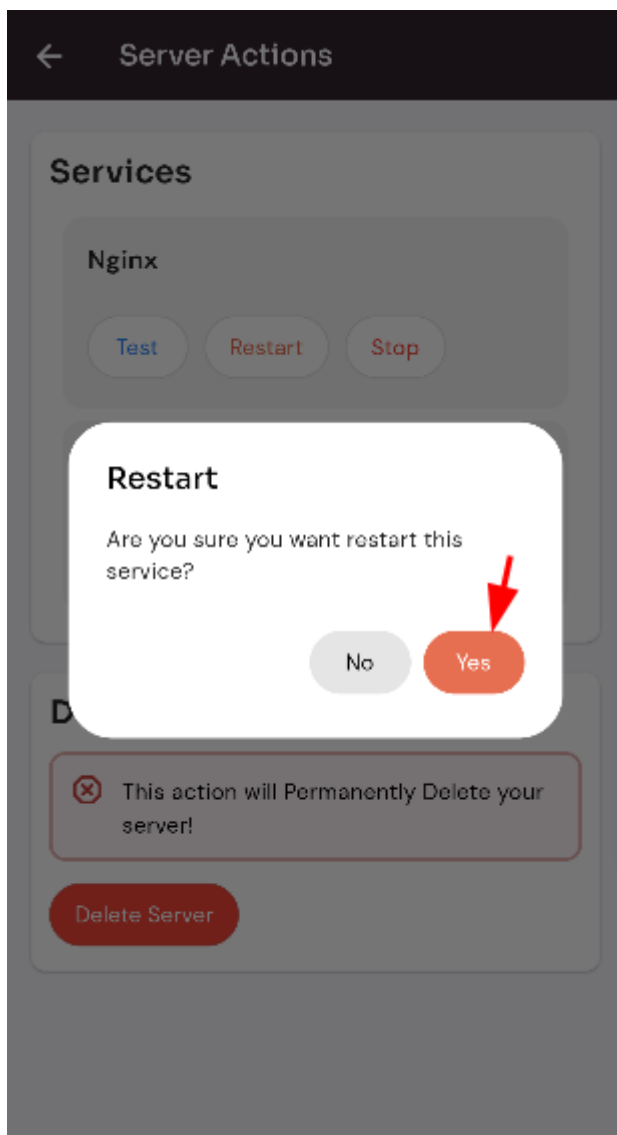
([Use this link to view How to Navigate](#)).

Restart MySQL Service:

Click on the Restart button.



Click on the Yes button.



Here, you can see MySQL Service has been restarted successfully.

How to Stop MySQL Service forge?

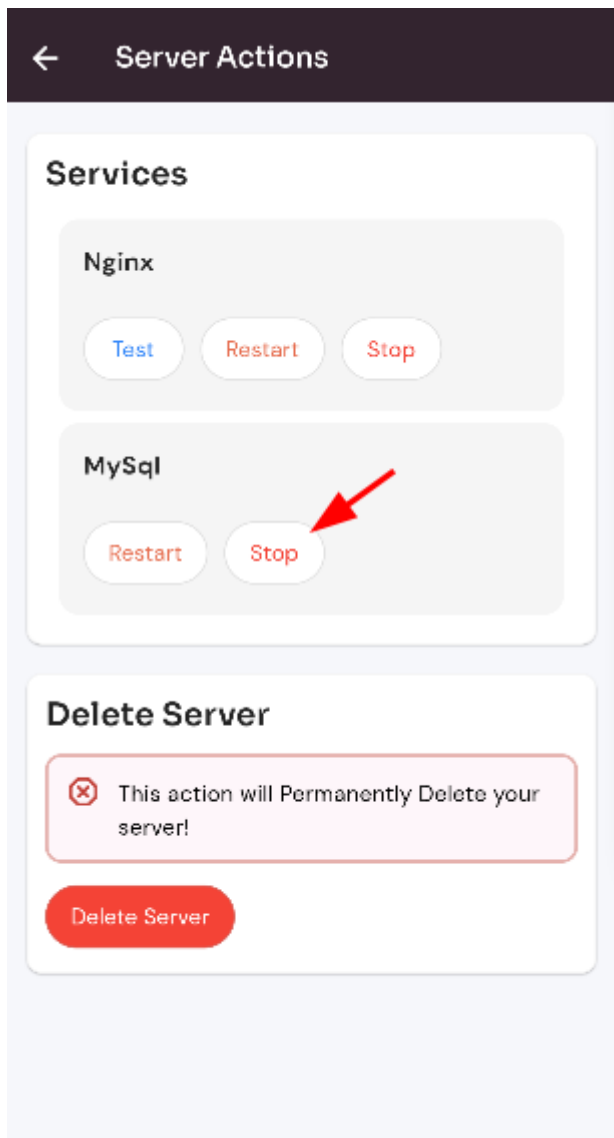
Follow the steps below to Stop MySQL Service.

Navigate to the Home Page of Forge

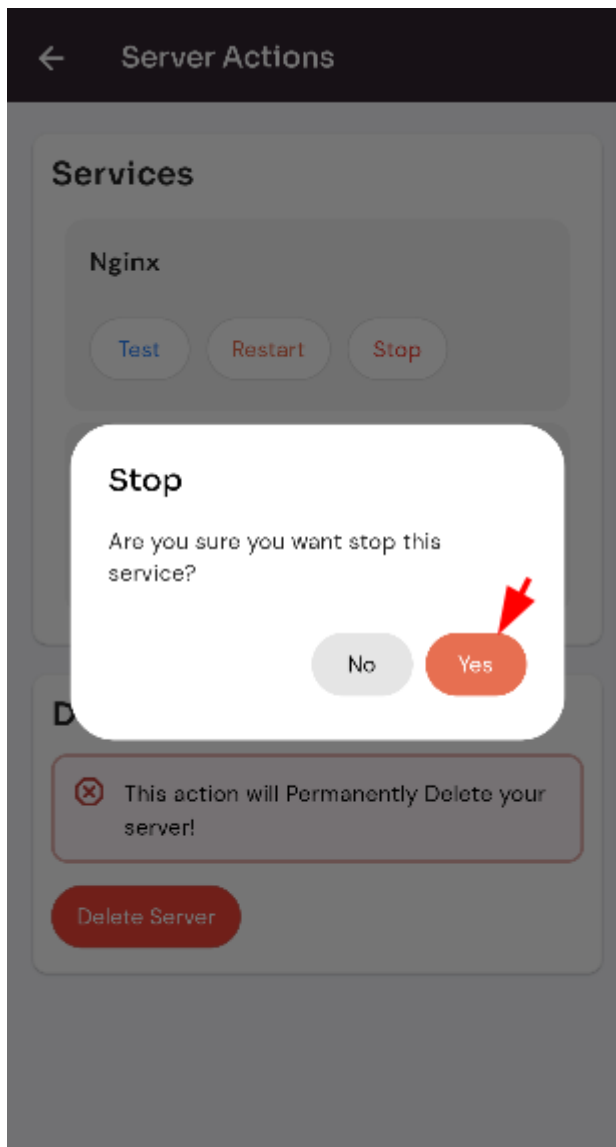
([Use this link to view How to Navigate](#)).

Stop MySQL Service:

Click on the Stop button.



Click on the yes button.



Here, you can see MySQL Service has been Stoped successfully.

How to change php configuration version on site forge?

Follow the steps below to change the PHP configuration version on the site.

Navigate to the Home Page of Forge

([Use this link to view How to Navigate](#)).

change the PHP configuration version on the site:

([Use this link to view change the PHP configuration version on the site](#)).

How to Site PHP configuration Restart PHP version forge?

Follow the steps below to Site PHP configuration Restart the PHP version.

Navigate to the Home Page of Forge

([Use this link to view How to Navigate](#)).

Site PHP configuration Restart the PHP version:

([Use this link to view Site PHP configuration Restart the PHP version](#)).

How to install new PHP configuration version on Site forge ?

Follow the steps below to the new PHP configuration version on the Site.

Navigate to the Server PHP Dashboard([Use this link to view How to Navigate](#)).

the new PHP configuration version on the Site:

([Use this link to view the new PHP configuration version on the Site](#)).

How to Navigate Server PHP Dashboard in Forge?

Navigate to the Home Page of Forge(Use this link to view How to Navigate Home Page of Forge).

Navigate to the Server PHP Dashboard(Use this link to view How to Navigate Server PHP Dashboard).

How To Install An Older Version Of PHP in Forge?

Navigate to the Server PHP Dashboard([Use this link to view How to Navigate](#)).

Install An Older Version Of PHP in Forge([Use this link to view How to Install An Older Version Of PHP in Forge](#)).

How To Restart An Older Version Of PHP in Forge?

Navigate to the Server PHP Dashboard([Use this link to view How to Navigate](#)).

Restart An Older Version Of PHP in Forge([Use this link to view How to Restart An Older Version Of PHP in Forge](#)).

How To Check Events An Older Version Of PHP in Forge?

Navigate to the Server PHP Dashboard([Use this link to view How to Navigate](#)).

Check Events An Older Version Of PHP in Forge([Use this link to view How to Check Events An Older Version Of PHP in Forge](#)).

How To Set default An Older Version Of PHP in Forge?

Navigate to the Server PHP Dashboard(Use this link to view How to Navigate).

Set default An Older Version Of PHP in Forge(Use this link to view How to Set default An Older Version Of PHP in Forge).

How To Delete An Older Version Of PHP in Forge?

Navigate to the Server PHP Dashboard([Use this link to view How to Navigate](#)).

Delete An Older Version Of PHP in Forge([Use this link to view How to Delete An Older Version Of PHP in Forge](#)).

How To FPM Config An Older Version Of PHP in Forge?

Navigate to the Server PHP Dashboard([Use this link to view How to Navigate](#)).

FPM Config An Older Version Of PHP in Forge([Use this link to view How to FPM Config An Older Version Of PHP in Forge](#)).

Database Forge

How to create database forge?

Follow the steps below to Create a database in Forge.

Navigate to the Home Page of Forge

([Use this link to view How to Navigate](#)).

Create database:

([Use this link to view Create database](#)).

How to create database user forge?

Follow the steps below to Create a User Database in Forge.

Navigate to the Home Page of Forge

([Use this link to view How to Navigate](#)).

Create User database:

([Use this link to view Create User database](#)).

How to delete database forge?

Follow the steps below to Delete Deamon in Forge.

Navigate to the Home Page of Forge

([Use this link to view How to Navigate](#)).

Delete Deamon:

([Use this link to view Delete Deamon](#)).

How to delete database user forge?

Follow the steps below to Delete Deamon in Forge.

Navigate to the Home Page of Forge

([Use this link to view How to Navigate](#)).

Delete Deamon:

([Use this link to view Delete Deamon](#)).

How to edit database user forge?

Follow the steps below to edit Deamon in Forge.

Navigate to the Home Page of Forge

([Use this link to view How to Navigate](#)).

Edit Deamon:

([Use this link to view and edit Deamon](#)).

How to Change Manage Redis Password forge?

Follow the steps below to Change Manage Redis Password in Forge.

Navigate to the Home Page of Forge

([Use this link to view How to Navigate](#)).

Change Manage Redis Password:

([Use this link to view Change Manage](#)).

How to Check Detail forge?

Follow the steps below to Check the Detail in Forge.

Navigate to the Home Page of Forge

([Use this link to view How to Navigate](#)).

Check Detail:

([Use this link to view Check Detail](#)).

Aliases Forge

How to add Shell Aliases to the site in forge?

Follow the steps below to add Shell Aliases to the site.

Navigate to the Home Page of Forge

([Use this link to view How to Navigate](#)).

add Shell Aliases to the site:

([Use this link to view and add Shell Aliases to the site](#)).

How to add form groups in site Shell Settings Forge?

Follow the steps below to add form groups in the site Shell Settings.

Navigate to the Home Page of Forge

([Use this link to view How to Navigate](#)).

add form groups in site Shell Settings:

([Use this link to add form groups in the site Shell Settings](#)).

How to delete Shell Aliases data on Site Shell Settings forge?

Follow the steps below to delete Shell Aliases data on Site Shell Settings.

Navigate to the Home Page of Forge

([Use this link to view How to Navigate](#)).

delete Shell Aliases data on Site Shell Settings:

([Use this link to view delete Shell Aliases data on Site Shell Settings](#)).

How to edit Shell Aliases on the site shell setting forge?

Follow the steps below to edit Shell Aliases on the site shell setting.

Navigate to the Home Page of Forge

([Use this link to view How to Navigate](#)).

edit Shell Aliases on the site shell setting:

([Use this link to view and edit Shell Aliases on the site shell setting](#)).

Server Forge

How to Change Forge Server Action forge?

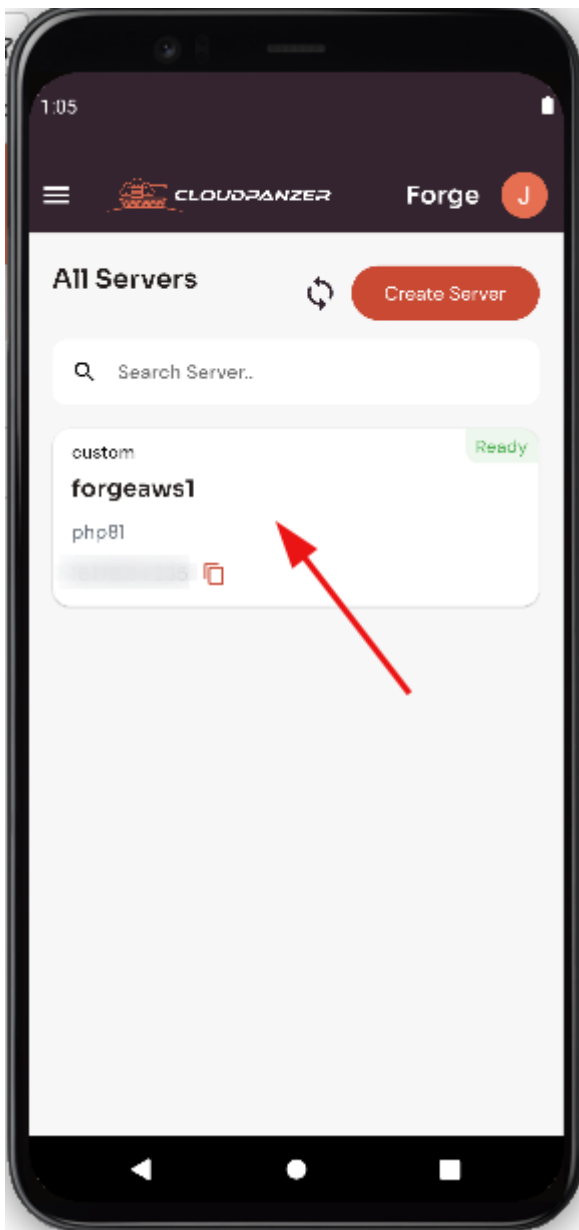
Tutorial :

You can watch the Video or Continue reading the post.

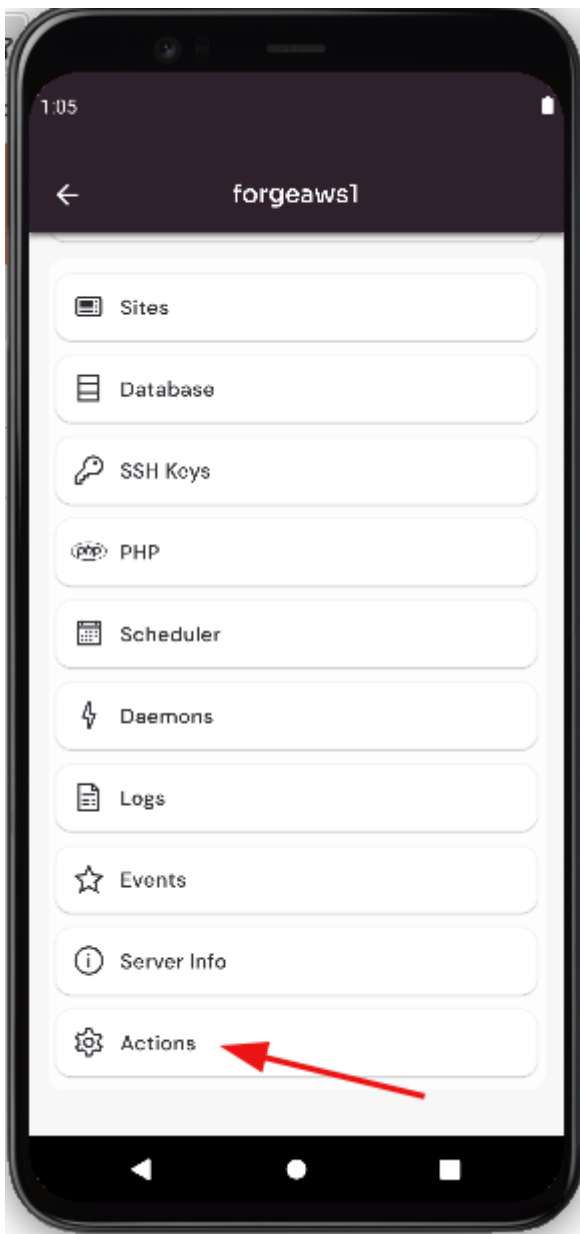
https://www.youtube.com/embed/CA8CuvFsf_0

Follow the steps below Change Forge Server Action

Once logged in, select "Forge" integration, look for a "Server" and click on it.

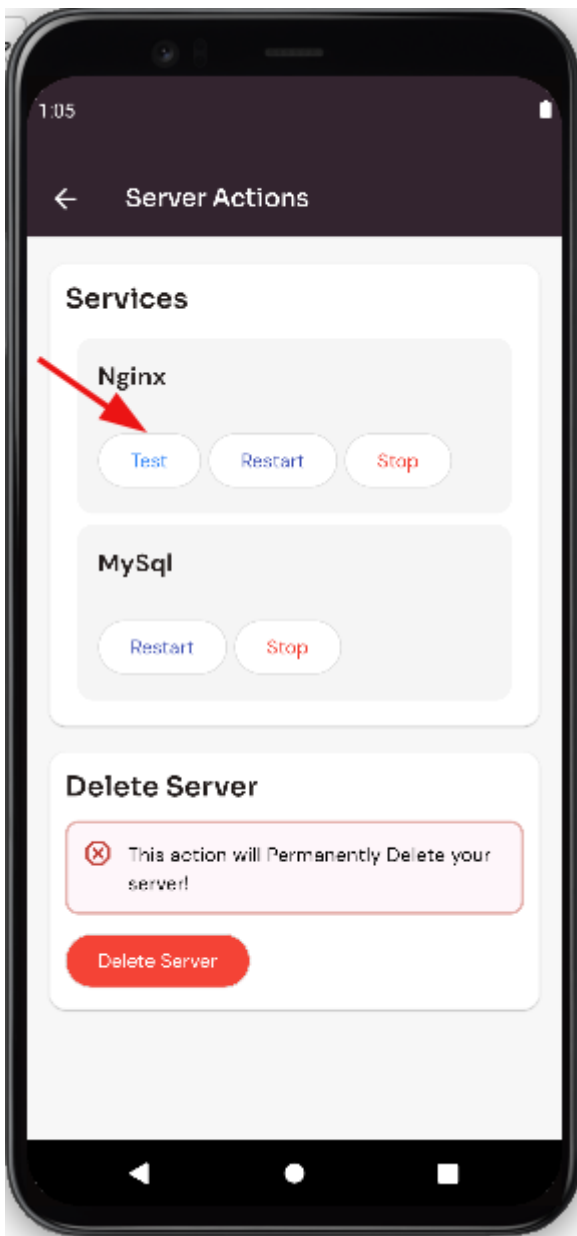


Click on the "Actions" button.

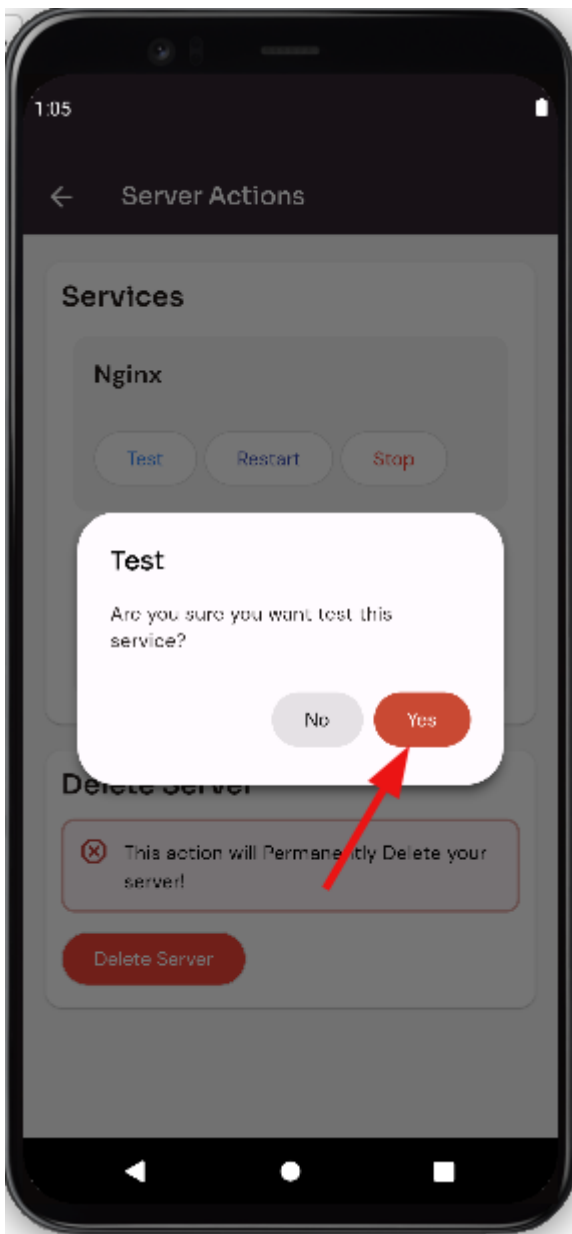


Test Nginx Service :

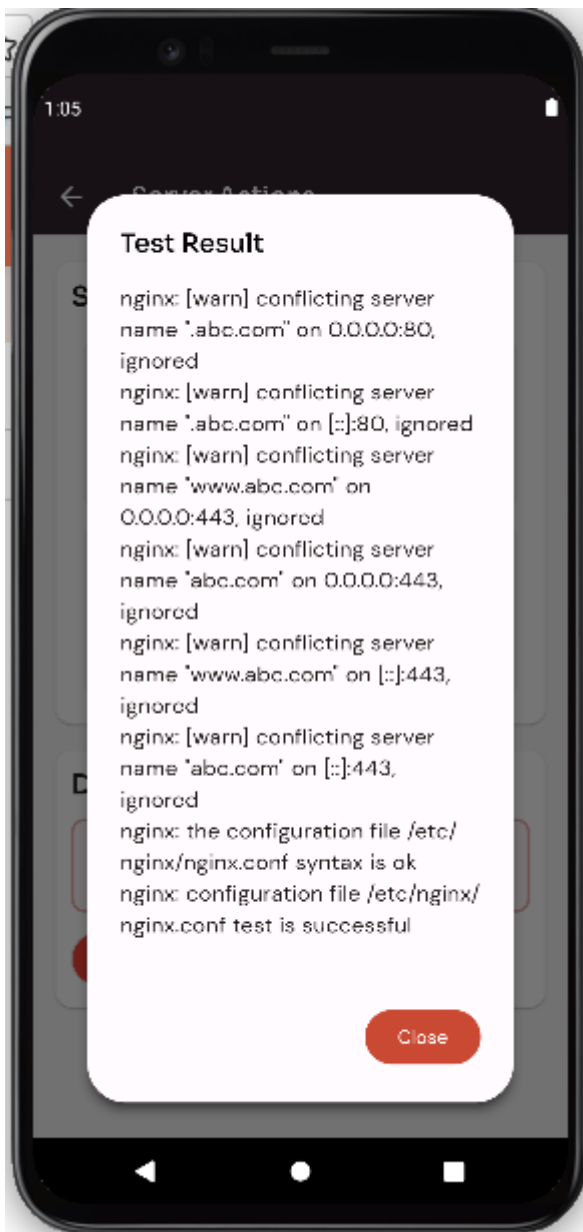
Click on the "Test" button.



Click on the yes button.

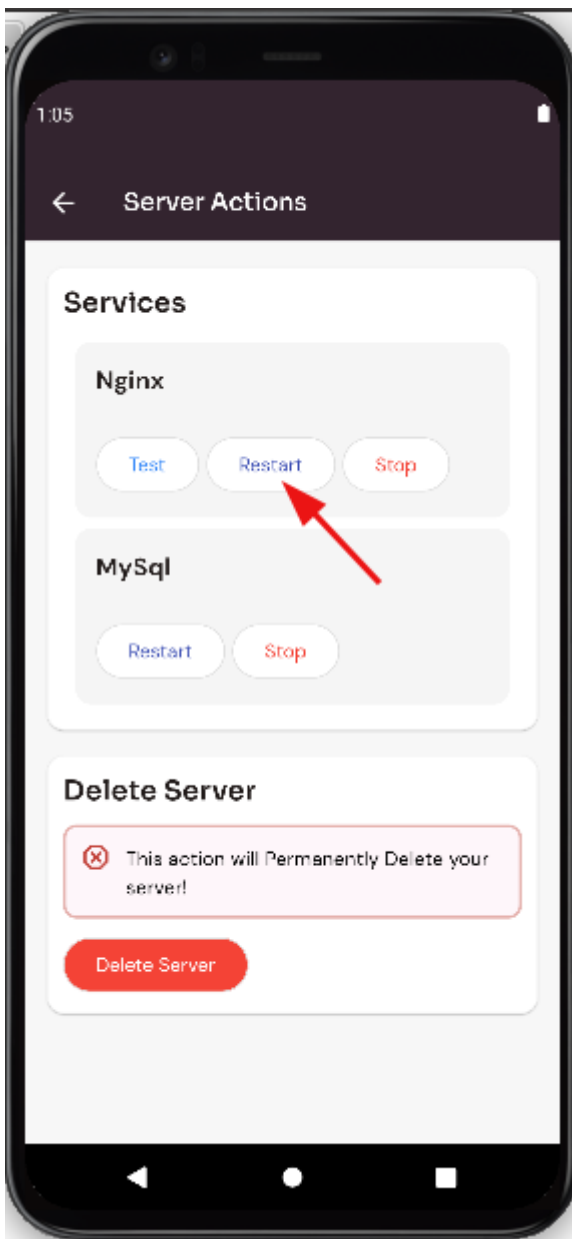


Here, you can see the test result.

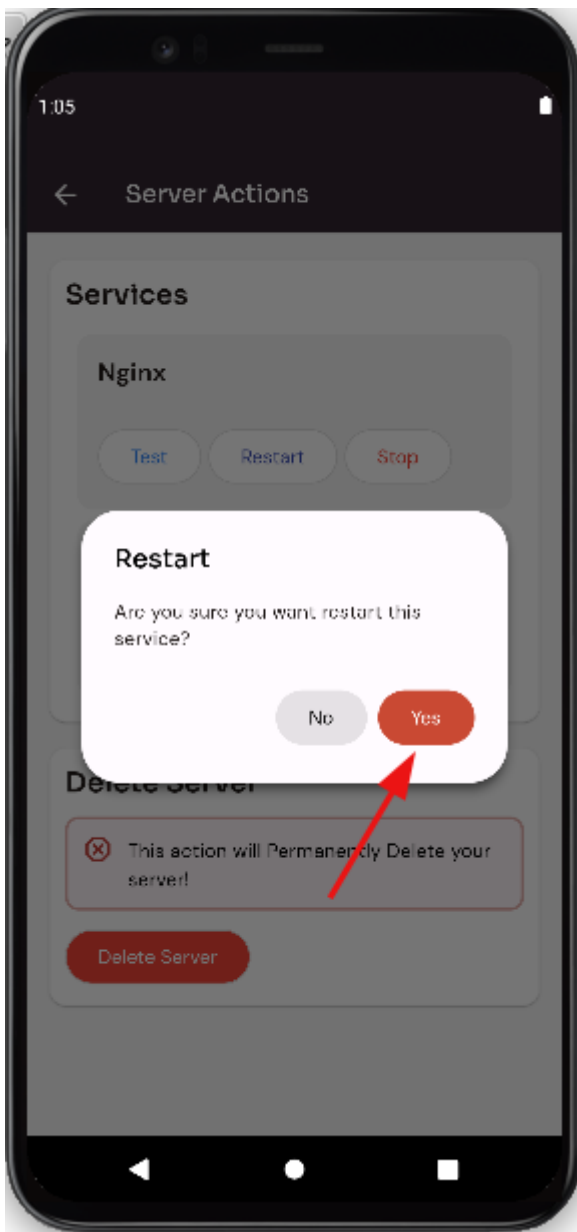


Restart Nginx Service :

Click on the "Restart" button.



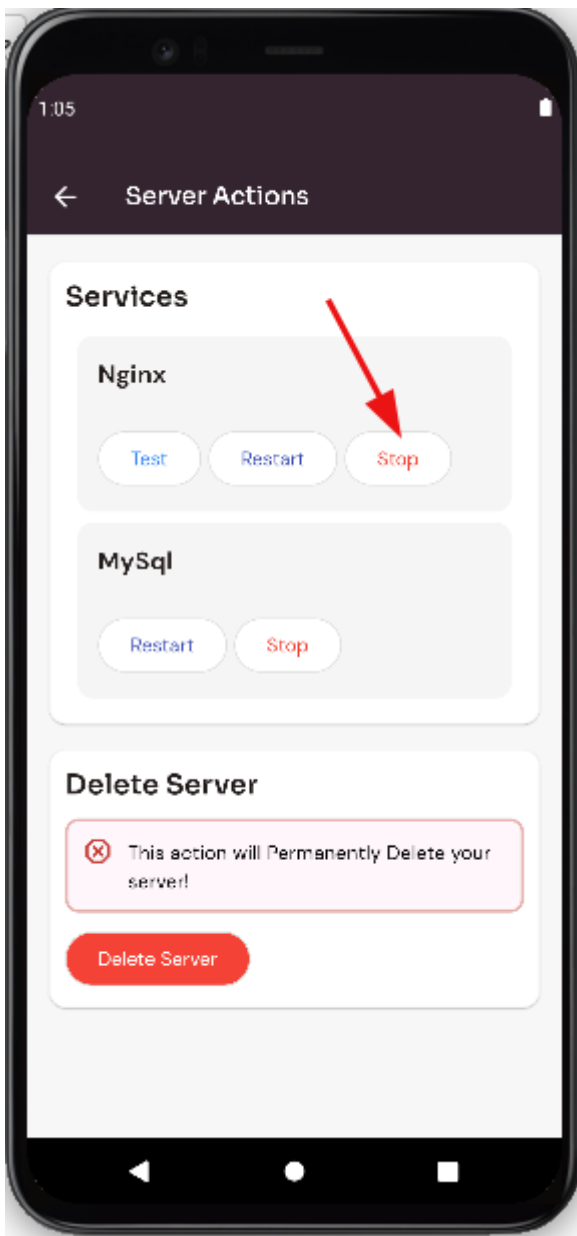
Click on the yes button.



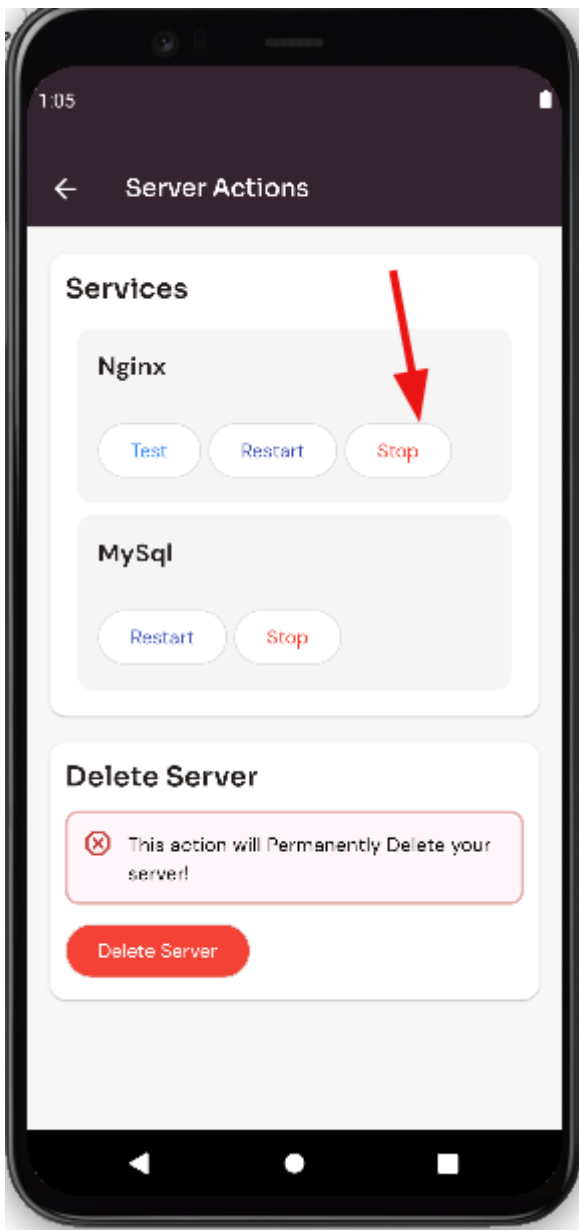
Here, you can see the server restarted successfully.

Stop Nginx Service :

Click on the "Stop" button.



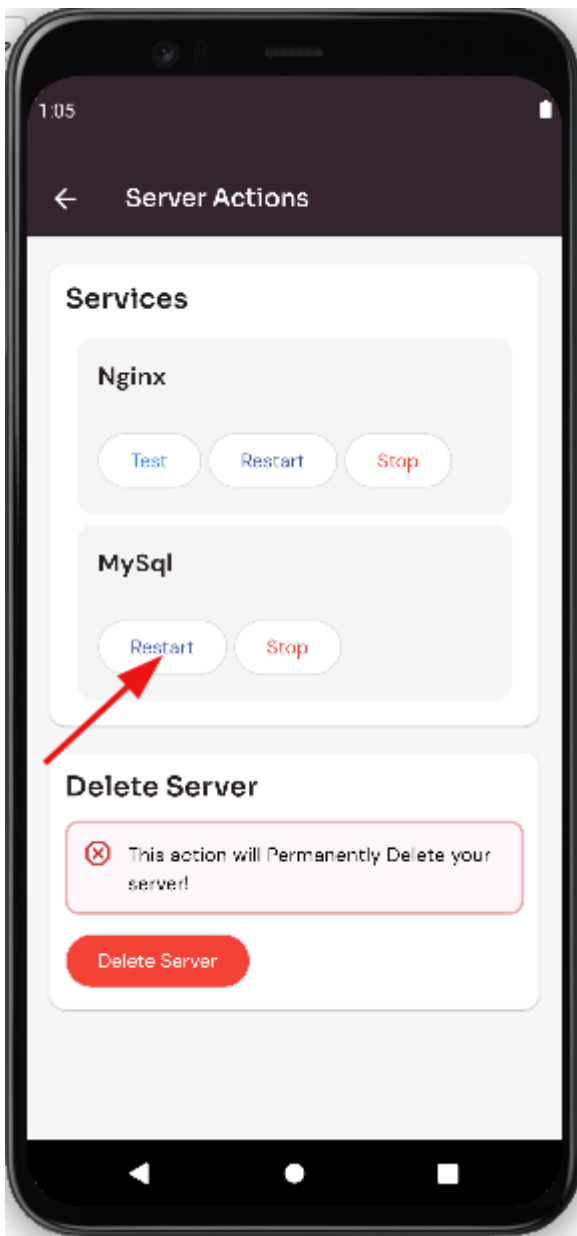
Click on the yes button.



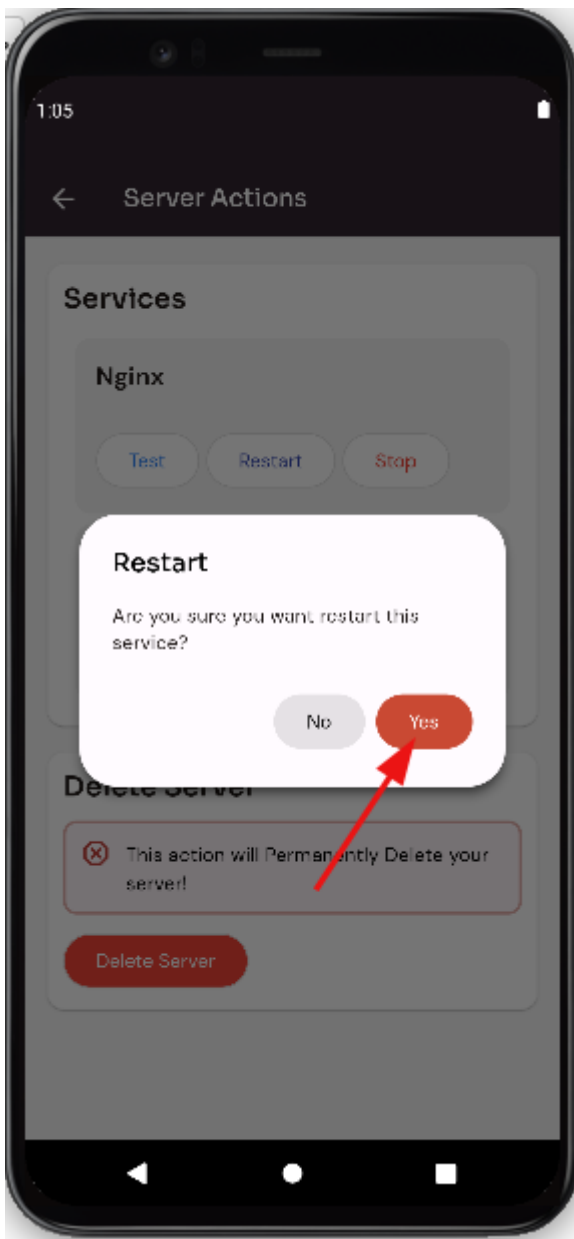
Here, you can see the server stopped successfully.

Restart Mysql Service :

Click on the "Restart" button.



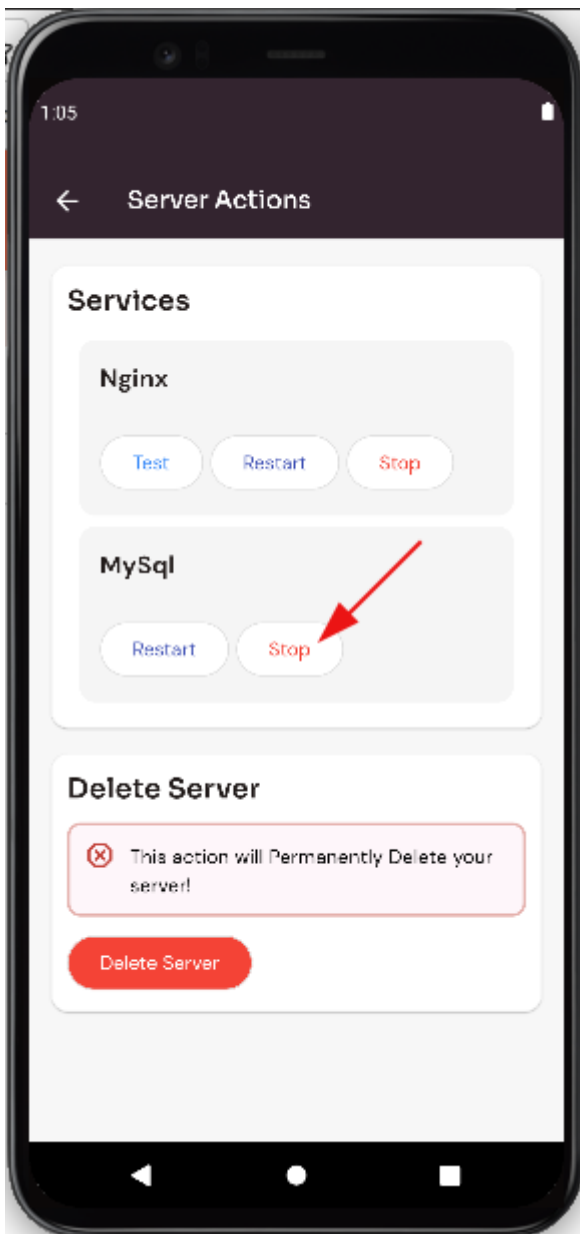
Click on the yes button.



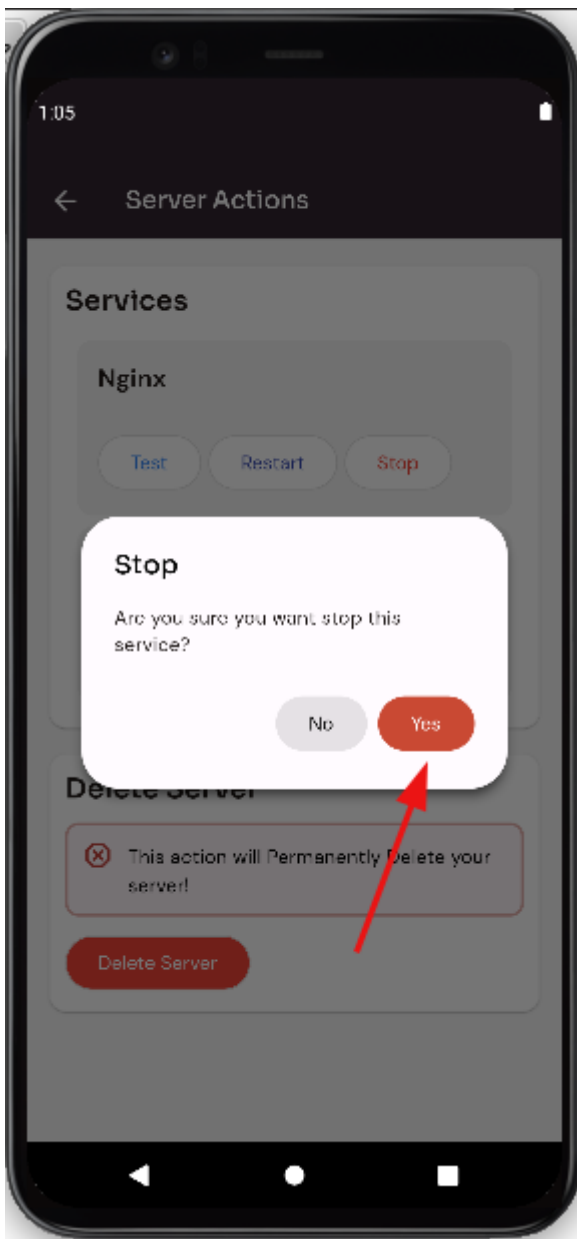
Here, you can see the server restarted successfully.

Stop Mysql Service :

Click on the "Stop" button.



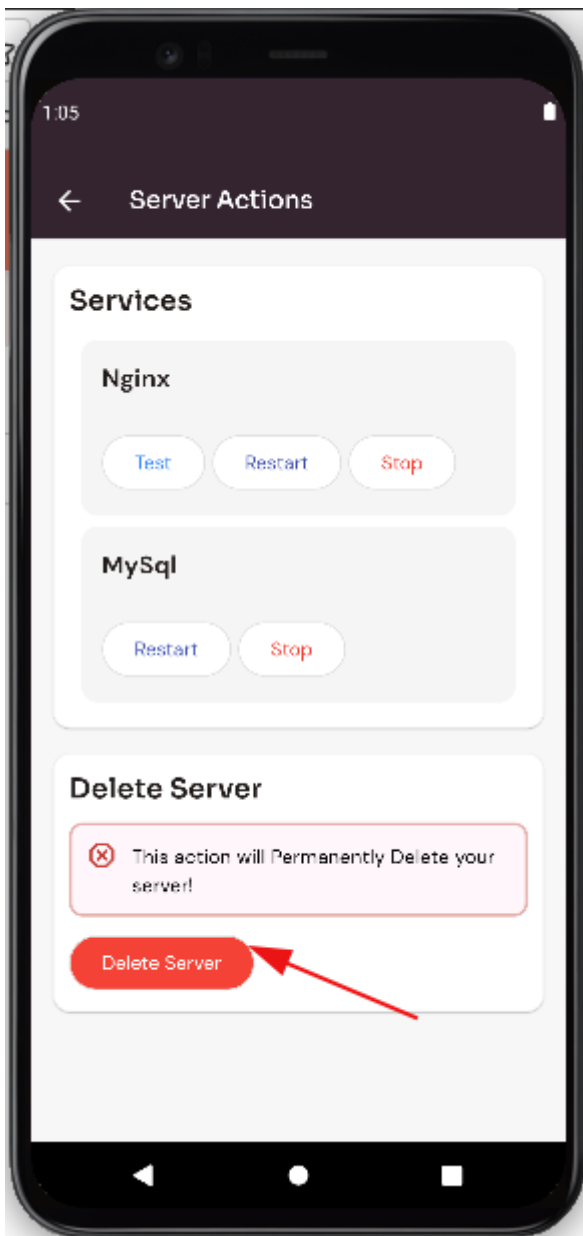
Click on the yes button.



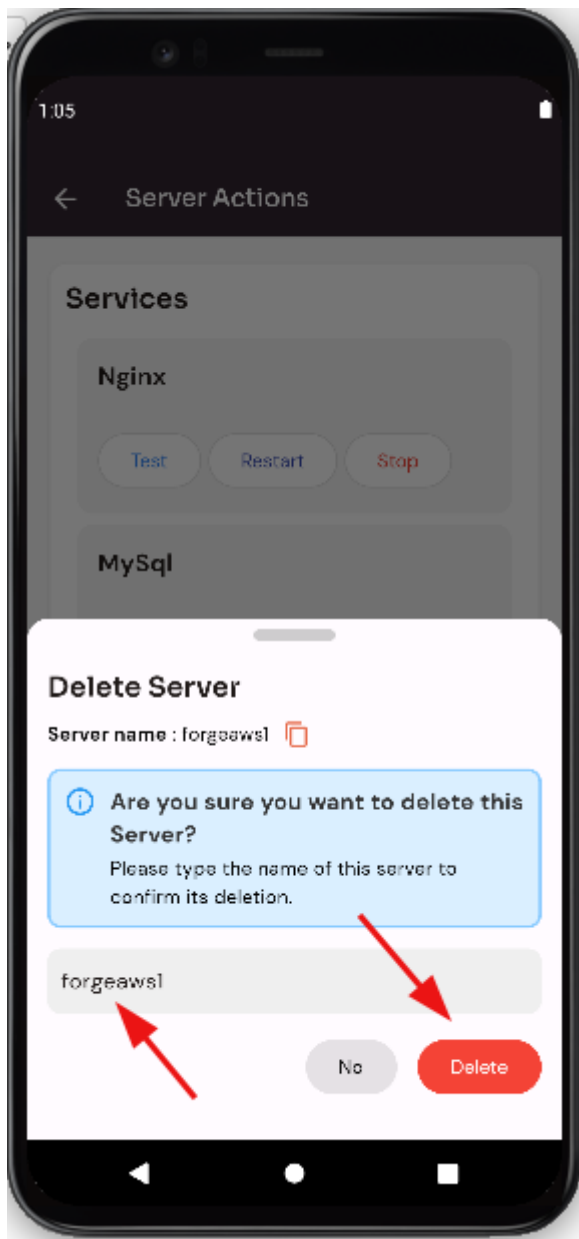
Here, you can see the server stopped successfully.

Delete Server :

Click on the "Delete Server" button.



Enter the server name and Click on the "Delete" button.



How to check the server Activity forge?

Follow the steps below to check the server Activity.

Navigate to the Home Page of Forge

([Use this link to view How to Navigate](#)).

Check the server Activity:

([Use this link to view Check the server Activity](#)).

How to delete server permanently forge?

Follow the steps below to delete the server permanently.

Navigate to the Home Page of Forge

([Use this link to view How to Navigate](#)).

delete server permanently:

([Use this link to view deleted server permanently](#)).

How to Create Scheduler in forge?

Follow the steps below to Create a Scheduler in forge.

Navigate to the Home Page of Forge

([Use this link to view How to Navigate](#)).

Create Scheduler in the forge:

([Use this link to Create a scheduler](#)).

How to check events forge?

Follow the steps below to check events.

Navigate to the Home Page of Forge

([Use this link to view How to Navigate](#)).

Check events:

([Use this link to view check events](#)).

How to generate server public key forge?

Follow the steps below to generate the server public key forge

Navigate to the Home Page of Forge

([Use this link to view How to Navigate](#)).

Server Info Server Public key:

([Use this link to view Server Info Server Public key](#)).

How to change server username forge?

Follow the steps below to change the server username.

Navigate to the Home Page of Forge

([Use this link to view How to Navigate](#)).

Server Info Server Username:

([Use this link to view Server Info Server Username](#)).

How to change Server Metadata forge?

Follow the steps below to change Server Metadata forge.

Navigate to the Home Page of Forge

([Use this link to view How to Navigate](#)).

check Server Info Server Metadata:

([Use this link to view and check Server Info Server Metadata](#)).

How to Restart a Server forge?

Follow the steps below to Restart a Server.

Navigate to the Home Page of Forge

([Use this link to view How to Navigate](#)).

Restart a Server:

([Use this link to view Restart a Server](#)).

How to Config MariaDB Forge?

Follow the steps below to Config MariaDB.

Navigate to the Home Page of Forge

([Use this link to view How to Navigate](#)).

Config MariaDB:

([Use this link to view Config MariaDB](#)).

How to Delete Protection Forge?

Follow the steps below to Delete Protection.

Navigate to the Home Page of Forge

([Use this link to view How to Navigate](#)).

Delete Protection:

([Use this link to view Delete Protection](#)).

How to Delete Server Forge?

Follow the steps below to Delete Server.

Navigate to the Home Page of Forge

([Use this link to view How to Navigate](#)).

Delete Server:

([Use this link to view Delete Server](#)).

How to check Scheduler Events Forge?

Follow the steps below to check Scheduler Events.

Navigate to the Home Page of Forge

([Use this link to view How to Navigate](#)).

Check Scheduler Events:

([Use this link to view Check Scheduler](#)).

How to Delete Scheduler in Forge?

Deleting a scheduler is a permanent action and cannot be undone. Make sure you really want to delete the scheduler before proceeding.

Follow the steps below to Delete Scheduler in forge.

Navigate to the Home Page of Forge

([Use this link to view How to Navigate](#)).

Delete Scheduler in the forge:

([Use this link to Delete a scheduler](#)).

Sites Forge

How to create a site for Forge?

Follow the steps below to create a site.

Navigate to the Home Page of Forge

([Use this link to view How to Navigate](#)).

Create a site:

([Use this link to view and create a site](#)).

How to run a Command Forge?

Follow the steps below to run a Command.

Navigate to the Home Page of Forge

([Use this link to view How to Navigate](#)).

Run a Command:

([Use this link to view and run a Command](#)).

How to check site events Forge?

Follow the steps below to check site events.

Navigate to the Home Page of Forge

([Use this link to view How to Navigate](#)).

check site events:

([Use this link to view check site events](#)).

How to delete a site Forge?

Follow the steps below to delete a site.

Navigate to the Home Page of Forge

([Use this link to view How to Navigate](#)).

Delete a site:

([Use this link to view and delete a site](#)).

How to Delete Site Protection Forge?

Follow the steps below to Delete Site Protection.

Navigate to the Home Page of Forge

([Use this link to view How to Navigate](#)).

Delete Site Protection :

([Use this link to view Delete Site Protection](#)).

How to Site Shell Settings SH Forge?

Follow the steps below to Site Shell Settings SH.

Navigate to the Home Page of Forge

([Use this link to view How to Navigate](#)).

Site Shell Settings SH:

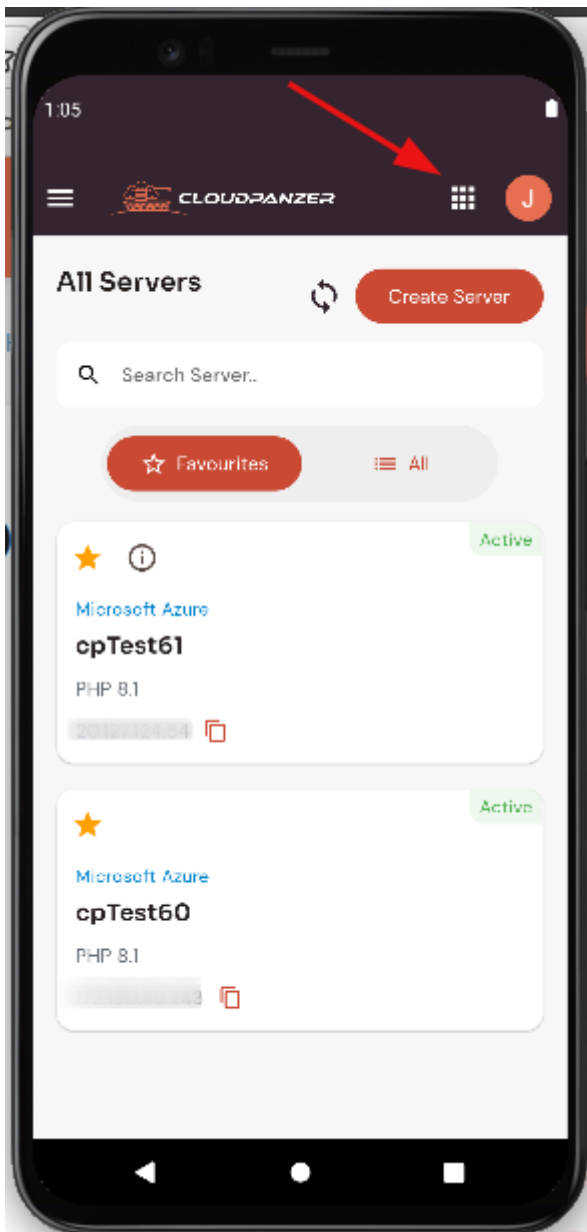
([Use this link to view Site Shell Settings SH](#)).

Forge Mobile App

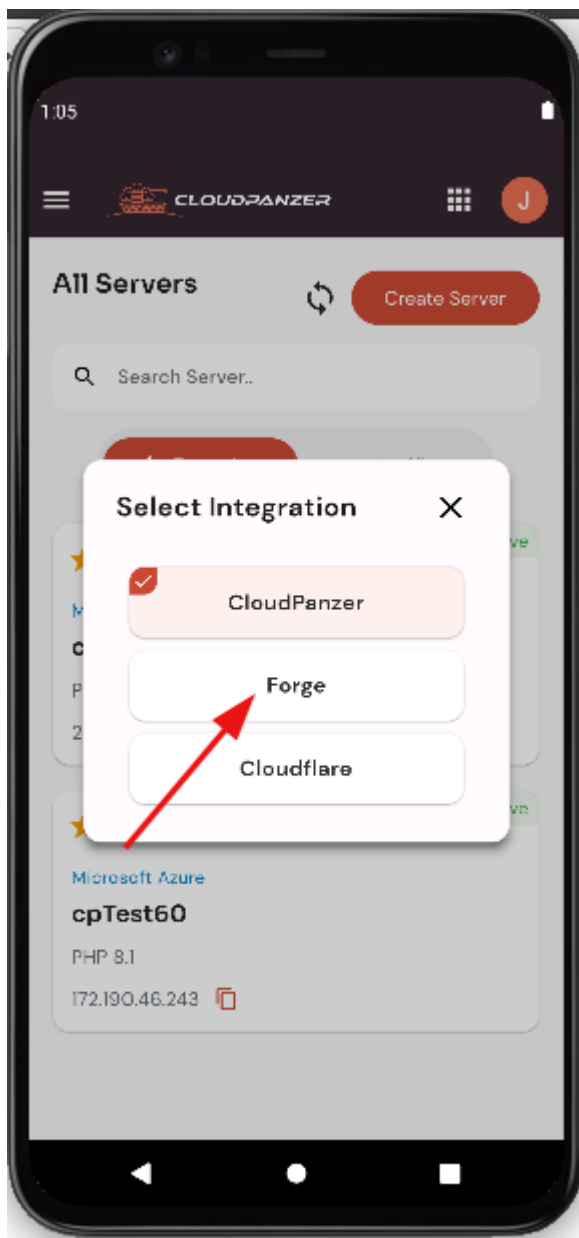
How to Navigate Forge Home?

Follow the steps below to Navigate Forge Homer.

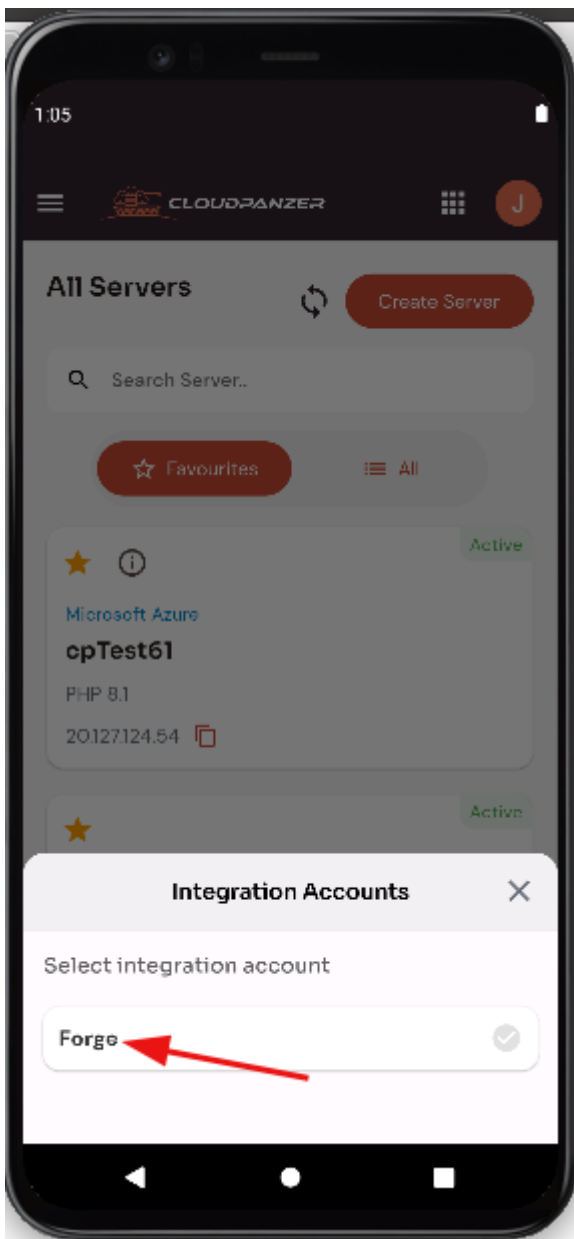
1: Click on the icon.



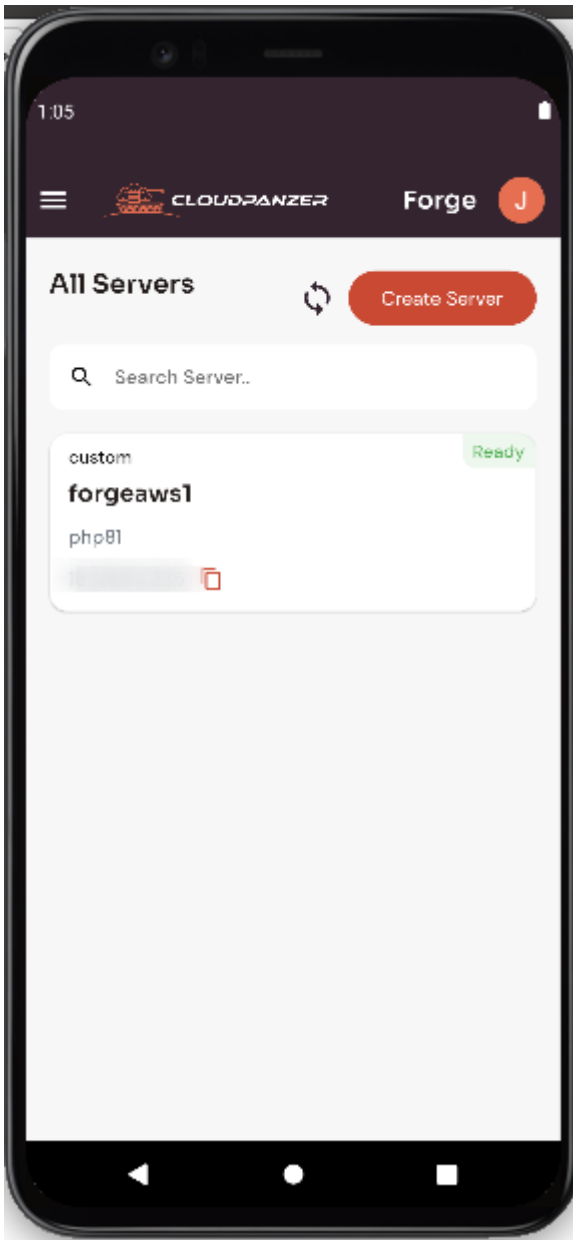
2: Click on the Forge card.



3. Select integration account.



Here, you can see Forge's home.



How to check Redis Logs in Forge?

Follow the steps below to check Redis Logs in Forge.

Navigate to the Home Page of Forge

([Use this link to view How to Navigate](#)).

checks Redis Logs in Forge:

([Use this link to view checks Redis Logs in Forge](#)).

App on a domain Forge

How to Word Press Verify Check Sums Forge?

It is important to regularly check the checksums of your WordPress files to ensure the integrity and security of your website. This simple process can help protect against malicious attacks and unintended modifications to your site.

Follow the steps below to Word Press Verify Check Sums.

Navigate to the Home Page of Forge

([Use this link to view How to Navigate](#)).

Word Press Verify Check Sums:

([Use this link to view Word Press Verify Check Sums](#)).

Install PHPMy Admin on a domain Forge?

PHPMyAdmin is a popular, open-source tool for managing MySQL databases. It allows you to easily create, modify, and delete databases and tables, as well as perform various other database management tasks.

Follow the steps below to Install PHPMy Admin on a domain Forge.

Navigate to the Home Page of Forge

([Use this link to view How to Navigate](#)).

Install PHPMy Admin on a domain Forge:

([Use this link to view Install PHPMy Admin on a domain Forge](#)).

How to Navigate to the app from Forge Dashboard?

Follow the steps below to Navigate to the app from Forge Dashboard.

Navigate to the Home Page of Forge

([Use this link to view How to Navigate](#)).

Navigate to the app from Forge Dashboard:

([Use this link to view Navigate to the app from Forge Dashboard](#)).

How to Enable Delete Protection on a Site?

Delete protection is a useful feature that can help prevent accidental or unauthorized deletions of important pages or assets on a website.

Follow the steps below to Enable Delete Protection on a Site.

Navigate to the Home Page of Forge

([Use this link to view How to Navigate](#)).

Enable Delete Protection on a Site:

([Use this link to view Enable Delete Protection on a Site](#)).

How to Enable Maintenance Mode on a Site Forge?

Maintenance mode is a useful feature that allows website administrators to temporarily shut down access to a website for the purpose of making updates or performing maintenance tasks. This can be especially helpful if you need to make significant changes to your website that may take a long time to complete, or if you want to ensure that your website is not being accessed while you are making changes.

Follow the steps below to Enable Maintenance Mode on a Site.

Navigate to the Home Page of Forge

([Use this link to view How to Navigate](#)).

Enable Maintenance Mode on a Site:

([Use this link to view Enable Maintenance Mode on a Site](#)).

How to Enable Permission app on a domain Forge?

It's important to carefully review the API scopes that an app is requesting permission to access before granting permission. Only grant access to the minimum necessary scopes to ensure the security and privacy of your domain. Once you've granted permission for an app, you can manage the app's access to your domain at any time by returning to the "OAuth Apps" section of the Advanced Settings page and revoking or modifying the app's permissions as needed.

Follow the steps below to Permission the app on a domain.

Navigate to the Home Page of Forge

([Use this link to view How to Navigate](#)).

Permission app on a domain :

([Use this link to view the Permission app on a domain](#)).

How to Migrate Domain app on a domain Forge?

Migrating a mobile app to a new domain can be a challenging process, especially if you are unfamiliar with the technical details involved. However, with the right tools and knowledge, it is possible to successfully migrate your app to a new domain without any major disruptions.

Follow the steps below to Migrate the Domain app on a domain.

Navigate to the Home Page of Forge

([Use this link to view How to Navigate](#)).

Migrate Domain app on a domain:

([Use this link to view Migrate Domain app on a domain](#)).

How to Uninstall App on a Site Forge?

Uninstalling an app will delete all of its data and content from your device. If you think you may want to use the app again in the future, you may want to consider disabling it instead of fully uninstalling it. Disabling an app will prevent it from running, but it will still be installed on your device and its data will be preserved.

Follow the steps below to Uninstall the App on a Site.

Navigate to the Home Page of Forge

([Use this link to view How to Navigate](#)).

Uninstall App on a Site:

([Use this link to view Uninstall App on a Site](#)).

How to Disable App on a Site Forge?

Disabling an app will not remove it from the site completely. It will simply turn off its functionality until it is re-enabled. If you want to permanently remove the app from the site, you will need to delete it. It is always a good idea to back up your site before making any changes, including disabling or deleting apps. This will allow you to revert back to a previous version if something goes wrong. Disabling an app can be a useful way to troubleshoot issues or temporarily remove functionality from a site.

Follow the steps below to Disable the App on a Site.

Navigate to the Home Page of Forge

([Use this link to view How to Navigate](#)).

Disable App on a Site:

([Use this link to view Disable App on a Site](#)).

Install WordPress on a Domain Forge.

Installing WordPress on your own domain allows you to have full control over your website and its content.

Follow the steps below to Install WordPress on a Domain.

Navigate to the Home Page of Forge

([Use this link to view How to Navigate](#)).

Install WordPress on a Domain:

([Use this link to view Install WordPress on a Domain](#)).

Install GitRepository on a Domain Froge.

Git is a version control system that allows developers to track changes to source code and collaborate with others on software projects. If you have a domain and want to host a Git repository on it

Follow the steps below to Install GitRepository on a Domain.

Navigate to the Home Page of Forge

([Use this link to view How to Navigate](#)).

Install GitRepository on a Domain:

([Use this link to view Install GitRepository on a Domain](#)).

Site Environment Forge

GitRepository Site Environment Forge

Follow the steps below to check GitRepository Site Environment.

Navigate to the Home Page of Forge

([Use this link to view How to Navigate](#)).

Check GitRepository Site Environment:

([Use this link to view Check GitRepository Site Environment](#)).

How to Navigate to the Site Environment From Dashboard Forge?

Follow the steps below to Navigate to the Site Environment From Dashboard.

Navigate to the Home Page of Forge

([Use this link to view How to Navigate](#)).

Navigate to the Site Environment From the Dashboard:

([Use this link to view Navigate to the Site Environment From Dashboard](#)).

WordPress Site Environment Forge

Follow the steps below to check the WordPress Site Environment.

Navigate to the Home Page of Forge

([Use this link to view How to Navigate](#)).

Check the WordPress Site Environment:

([Use this link to view Check the WordPress Site Environment](#)).

PHP My Admin Site Environment Forge

Follow the steps below to check the PHPMy Admin Site Environment.

Navigate to the Home Page of Forge

([Use this link to view How to Navigate](#)).

Check the PHP My Admin Site Environment:

([Use this link to view Check the PHPMy Admin Site Environment](#)).

How to backup of Site Environment Forge?

Follow the steps below to back up the Site Environment.

Navigate to the Home Page of Forge

([Use this link to view How to Navigate](#)).

Backup of Site Environment:

([Use this link to view the Backup of the Site Environment](#)).

SSH Key Forge

How to Add SSH Keys in Forge?

Follow the steps below to Add SSH Keys in Forge.

Navigate to the Home Page of Forge

([Use this link to view How to Navigate](#)).

Add SSH Keys:

([Use this link to view Add SSH Keys](#)).

How to Edit SSH Keys in Forge?

Follow the steps below to Edit SSH Keys in Forge.

Navigate to the Home Page of Forge:

([Use this link to view How to Navigate](#)).

Edit SSH Keys:

([Use this link to view Edit SSH Keys](#)).

How to Delete SSH Keys in Forge?

Follow the steps below to Delete SSH Keys in Forge.

Navigate to the Home Page of Forge

([Use this link to view How to Navigate](#)).

Add SSH Keys:

([Use this link to view Delete SSH Keys](#)).

Daemon Forge

How to Create Deamon Forge?

A daemon is a type of background process that runs on a computer and performs tasks without user intervention. Daemons are often used to perform system-level tasks, such as scheduling jobs, managing network connections, or monitoring system resources.

Follow the steps below to Create Deamon in Forge.

Navigate to the Home Page of Forge

([Use this link to view How to Navigate](#)).

Create Deamon:

([Use this link to view Create Deamon](#)).

How to Start Deamon Forge?

Starting a daemon is typically done through the command line, and involves a few steps. The first step in starting a daemon is to create a script that will be used to start and stop the daemon. This script should contain all of the necessary commands to start and stop the daemon, as well as any required configuration options.

Follow the steps below to start Deamon in Forge.

Navigate to the Home Page of Forge

([Use this link to view How to Navigate](#)).

Start Deamon:

([Use this link to view start Deamon](#)).

How to Stop Deamon Forge?

Stopping a daemon, or background service can be an important task for managing your system. Identify the name of the daemon you want to stop. This can usually be found in the documentation or by using the `ps` command to list all running processes.

Follow the steps below to Stop Deamon in Forge.

Navigate to the Home Page of Forge

([Use this link to view How to Navigate](#)).

Stop Deamon:

([Use this link to view Stop Deamon](#)).

How to Restart Deamon Forge?

A daemon is a background process that runs on a computer and performs tasks or services. In some cases, it may be necessary to restart a daemon in order to resolve issues or apply updates.

Follow the steps below to Restart Deamon in Forge.

Navigate to the Home Page of Forge

([Use this link to view How to Navigate](#)).

Restart Deamon:

([Use this link to view Restart Deamon](#)).

How to Edit supervisor conf in Daemons Forge?

The Supervisor daemon is a process control system that allows you to control and monitor processes on your system. It is often used to manage long-running processes, such as web servers or database servers.

Follow the steps below to Edit supervisor conf Deamon in Forge.

Navigate to the Home Page of Forge

([Use this link to view How to Navigate](#)).

Edit supervisor conf Deamon:

([Use this link to view Edit supervisor conf Deamon](#)).