

# How to add User SSH Keys through the cloudpanzer mobile application?

Secure Shell (SSH) is a network protocol that allows secure remote login and other secure network services between two networked computers. One of the ways to secure an SSH connection is to use SSH keys.

## **Tutorial :**

**You can watch the Video or Continue reading the post.**

<https://www.youtube.com/embed/Dd2S1Cv1-Jw>

Follow the steps below to add User SSH Keys.

1: Once logged in, look for the " Account Setting" option in the dialog. This is located in a dialog under your username.

2:00

TE



CLOUDPANZER



D

## All Servers



Create Server



Search Server..



Your account is on trial plan, The trial expires on **Sun, 9/10/2023**

Check Plans



Active

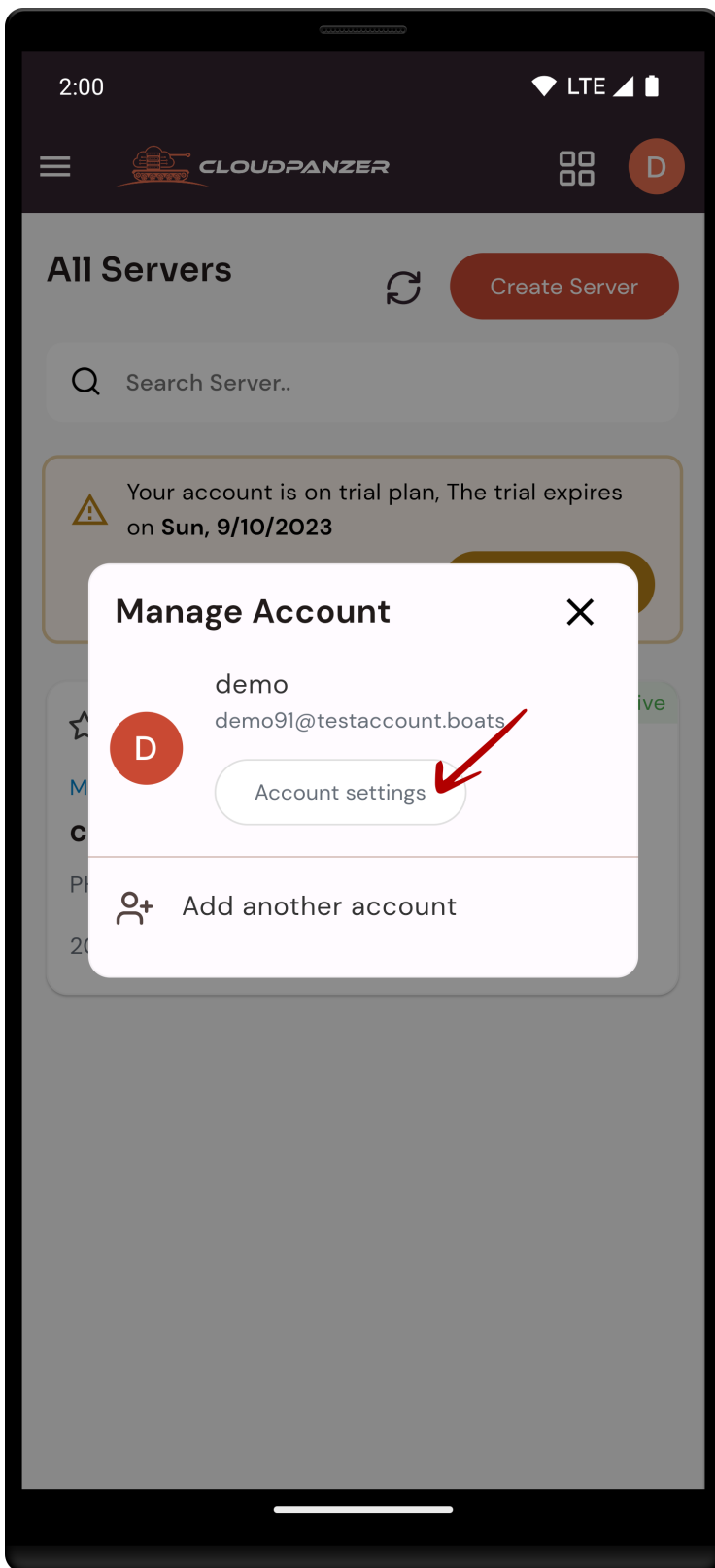
Microsoft Azure

**cpTest102**

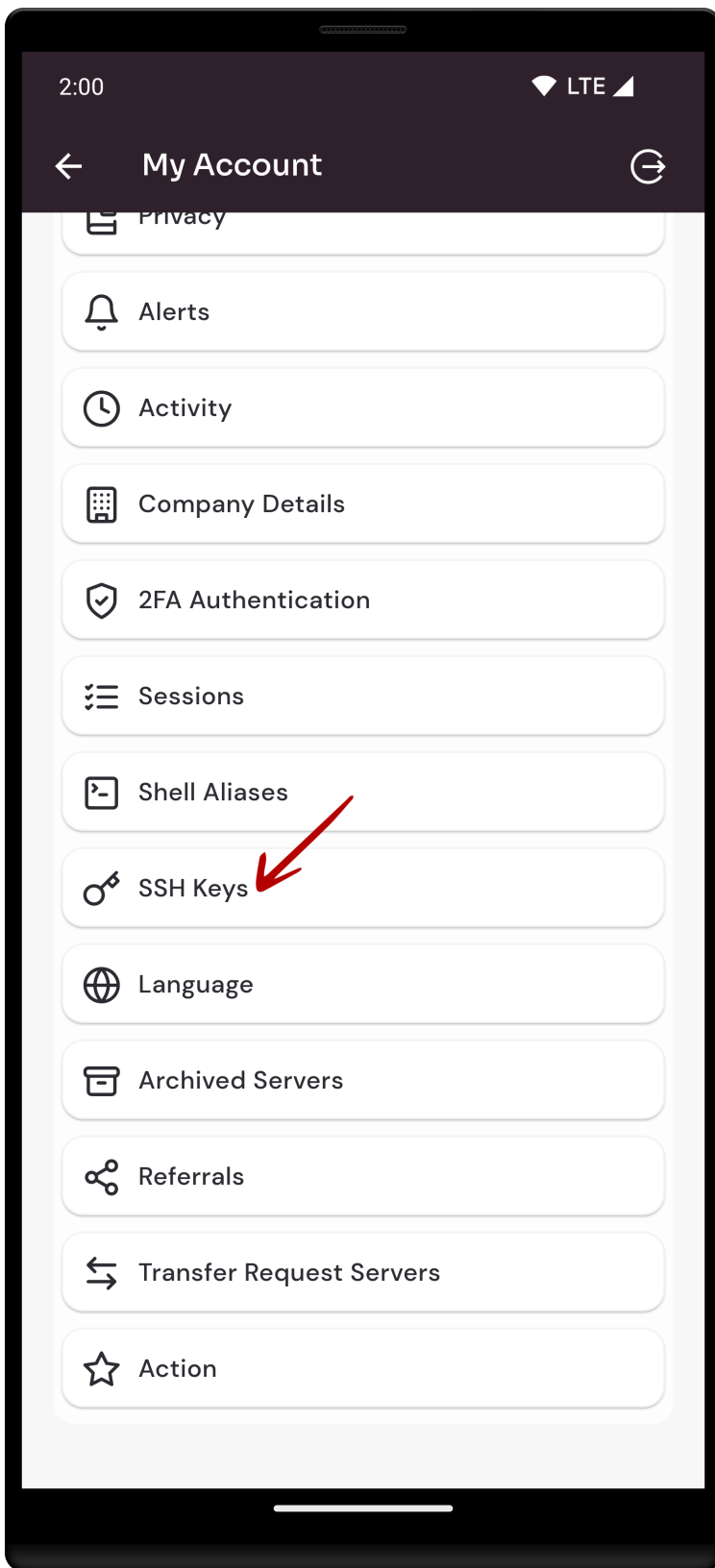
PHP 7.4

20.121.218.164

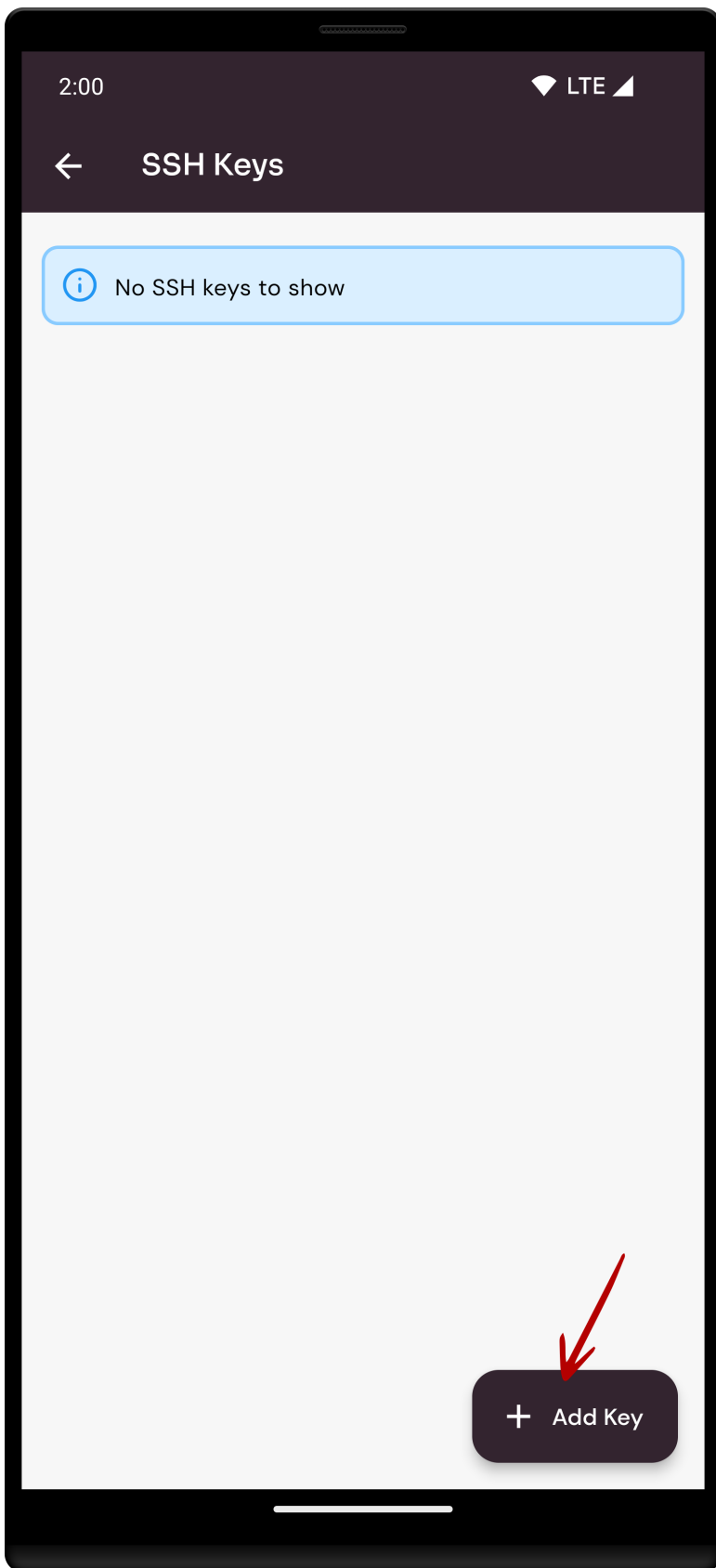




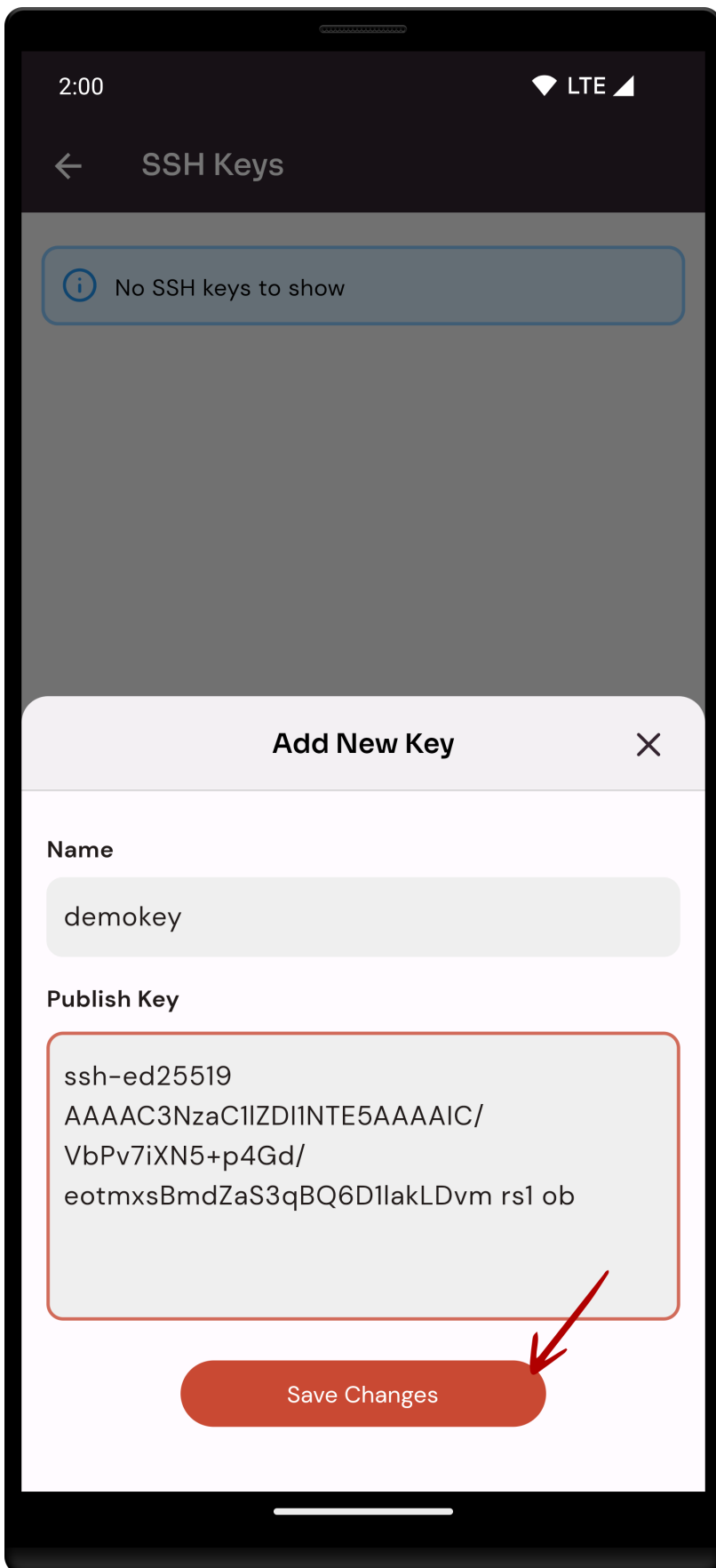
2: Select the SSH Keys option.



4: Click on Add Key button.



5: Fill in the fields and click on the Save Changes button.



Here, you can see SSH Keys Added Successfully.

2:00

LTE



## SSH Keys

demokey

Added: Mon, Aug 14 - 4:36 AM



+ Add Key

Looking for Web App Instructions?

Available at <https://kb.cloudpanzer.com/books/web-portal/page/how-to-add-user-ssh-keys>

---

Revision #10

Created 22 December 2022 04:33:31 by Admin

Updated 2 September 2023 07:13:59 by Admin